

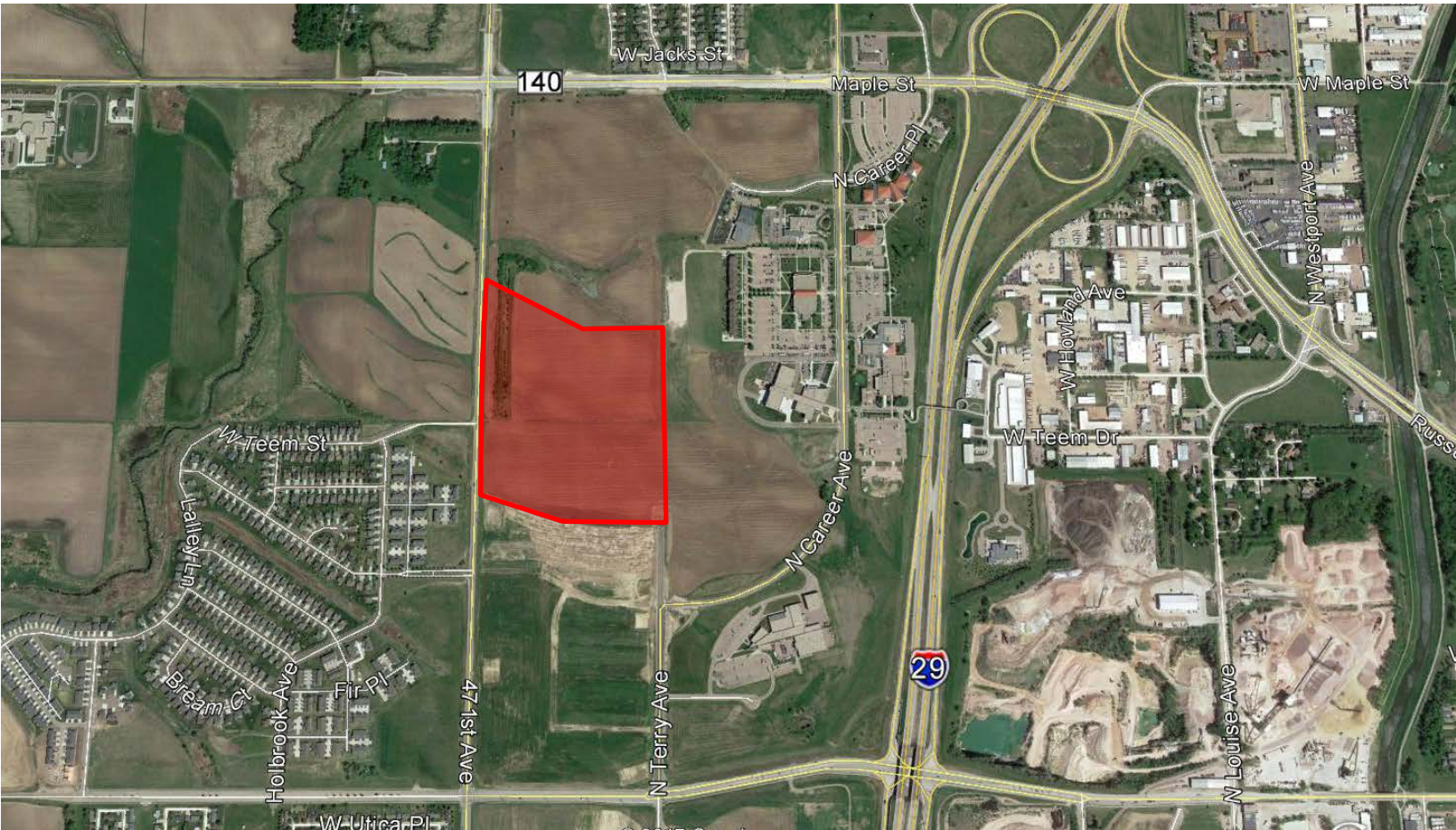
**JOURNEY DEVELOPMENT LAND
NORTH MARION ROAD
SIOUX FALLS, SD**

Real Estate Services

Bender
COMMERCIAL

**FOR SALE
DEVELOPMENT LAND**

We open doors.



PROPERTY FEATURES:

- **Up to 40 acres (Can be Subdivided)**
- **For Sale: Contact Broker for Price.**
- Future commercial, office and industrial lots available in Journey Development Park in northwest Sioux Falls.
- Available, but not rough graded.
- Concept plan completed.
- Strategically located between Madison Street and Maple Street, adjacent to Southeastern Votech.
- Easy access to I-29 at Maple Street interchange.
- Contact broker for covenants and restrictions.

For More Information, Please Contact:

DOUGLAS BROCKHOUSE, SIOR
dbrock@benderco.com
(605) 782-1664

MICHAEL BENDER, CCIM, SIOR
michael@benderco.com
(605) 782-1662



JOURNEY DEVELOPMENT LAND NORTH MARION ROAD SIOUX FALLS, SD

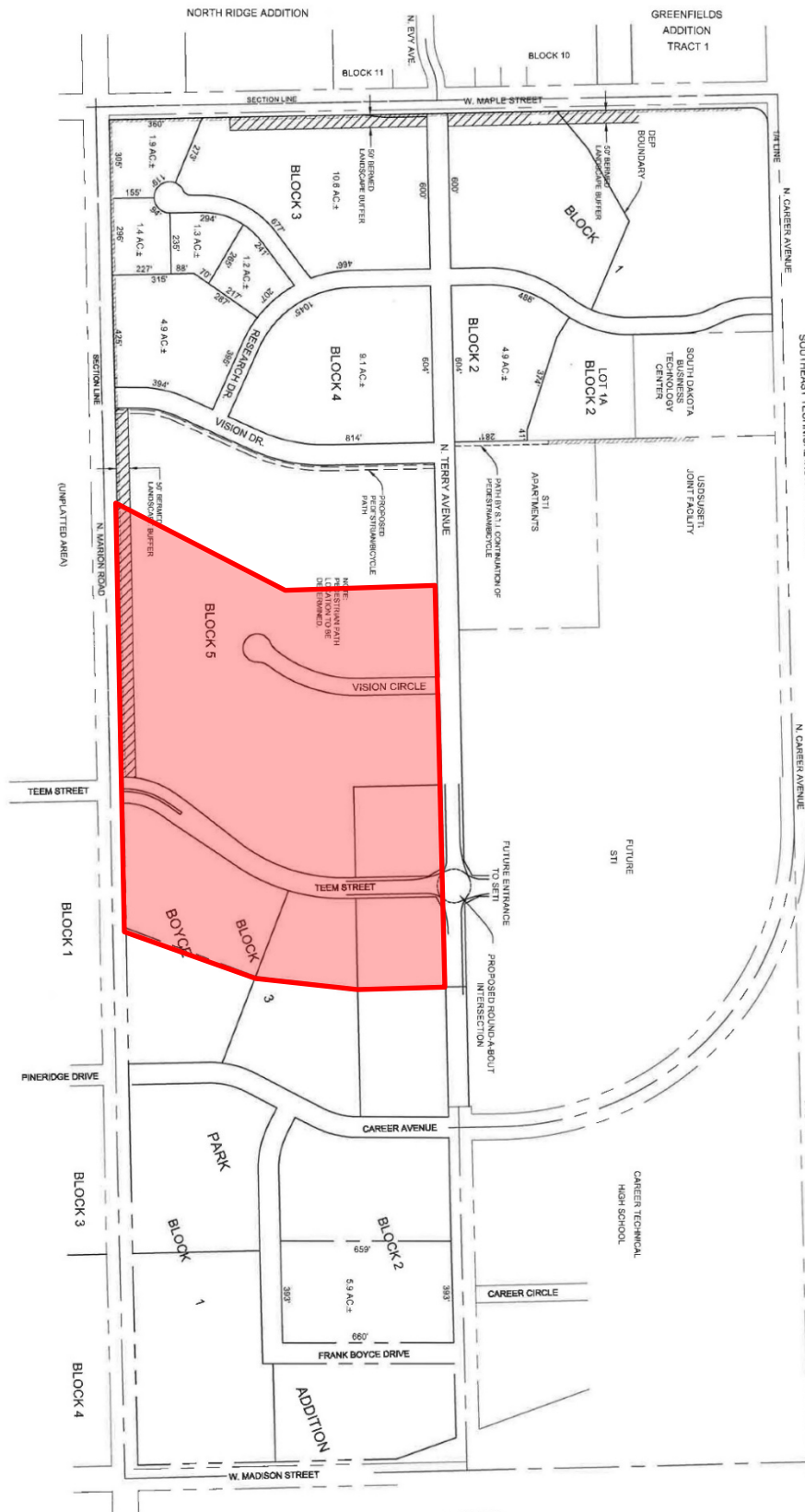
Real Estate Services

Bender

COMMERCIAL

CONCEPT PLAN

We open doors.



JOURNEY DEVELOPMENT LAND
NORTH MARION ROAD
SIOUX FALLS, SD

Real Estate Services

Bender
COMMERCIAL

We open doors.



**JOURNEY DEVELOPMENT LAND
NORTH MARION ROAD
SIOUX FALLS, SD**

Real Estate Services

Bender
COMMERCIAL

We open doors.

