

FOR LEASE



PERENNIAL PROPERTIES

OFFICE SPACE

Bender
COMMERCIAL



**7115 SOUTH LYNCREST PLACE
SIOUX FALLS, SD**



4,448 RSF



**\$23.00/SF NNN
EST NNNs: \$6.95/SF**

- Main Level - Suite 122: 4,448 RSF (4,081 USF)
- Newly constructed office building located near 81st Street and Minnesota Avenue in south Sioux Falls.
- Parking ratio of 1 space per 300 SF (74 parking spaces).
- Premium building signage available.
- Access available from Lyncrest Place.
- TIA negotiable.
- Neighboring businesses include Walmart, Jersey Mike's Subs, Security Savings Bank, Schulte Subaru, Circle K, Clean Ride Auto, Aldi, Reliabank, Sioux Falls Urgent Care and Valvoline Instant Oil Change.

BOBBIE TIBBETTS

bobbie@benderco.com

605-670-9455

REGGIE KUIPERS, SIOR

reggie@benderco.com

605-496-2966



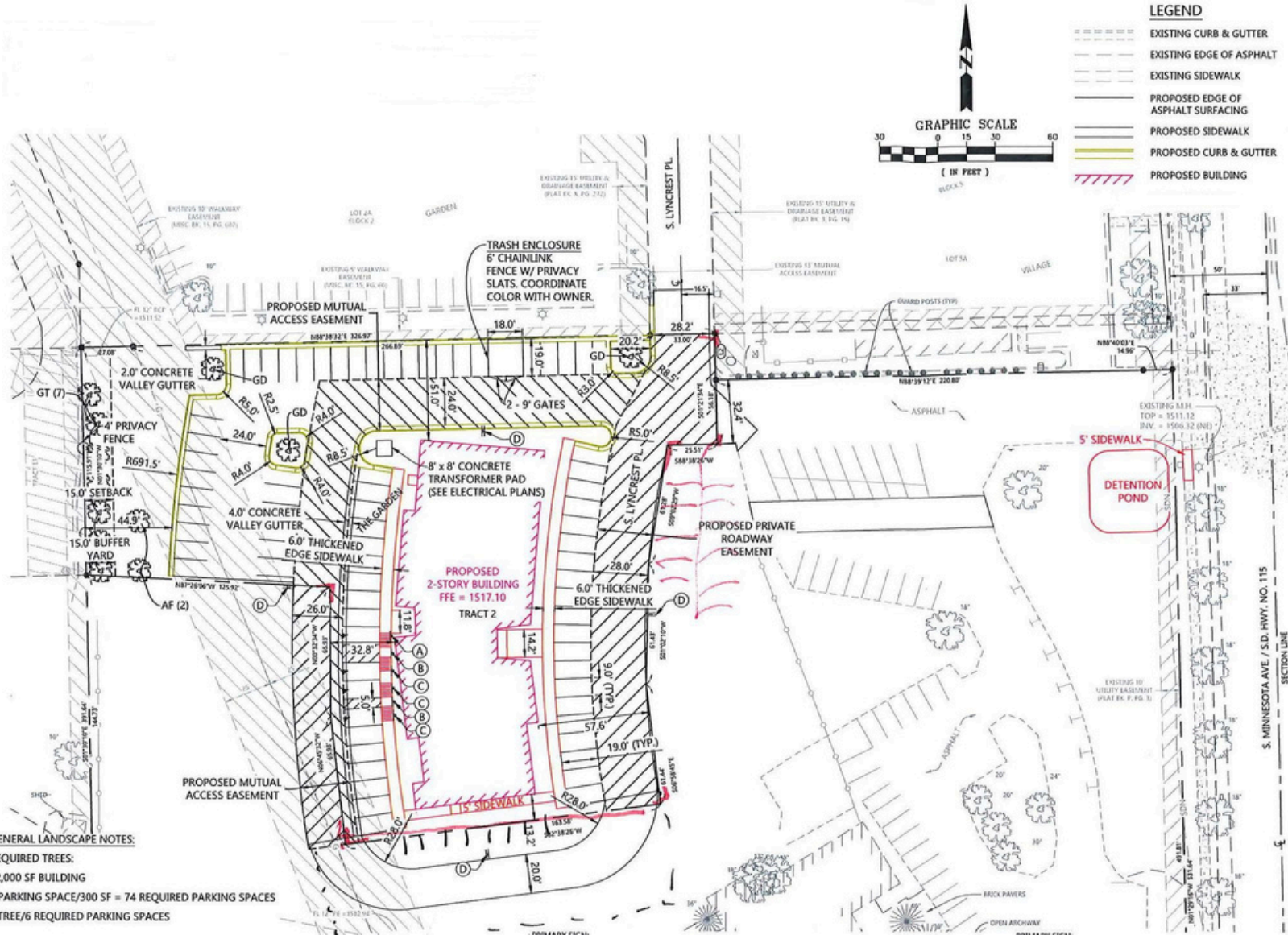
Bender Commercial Real Estate Services | 305 West 57th Street | Sioux Falls, SD 57108 | 605-336-7600 | benderco.com

© 2024 Bender Companies. Information herein deemed reliable, but not guaranteed.

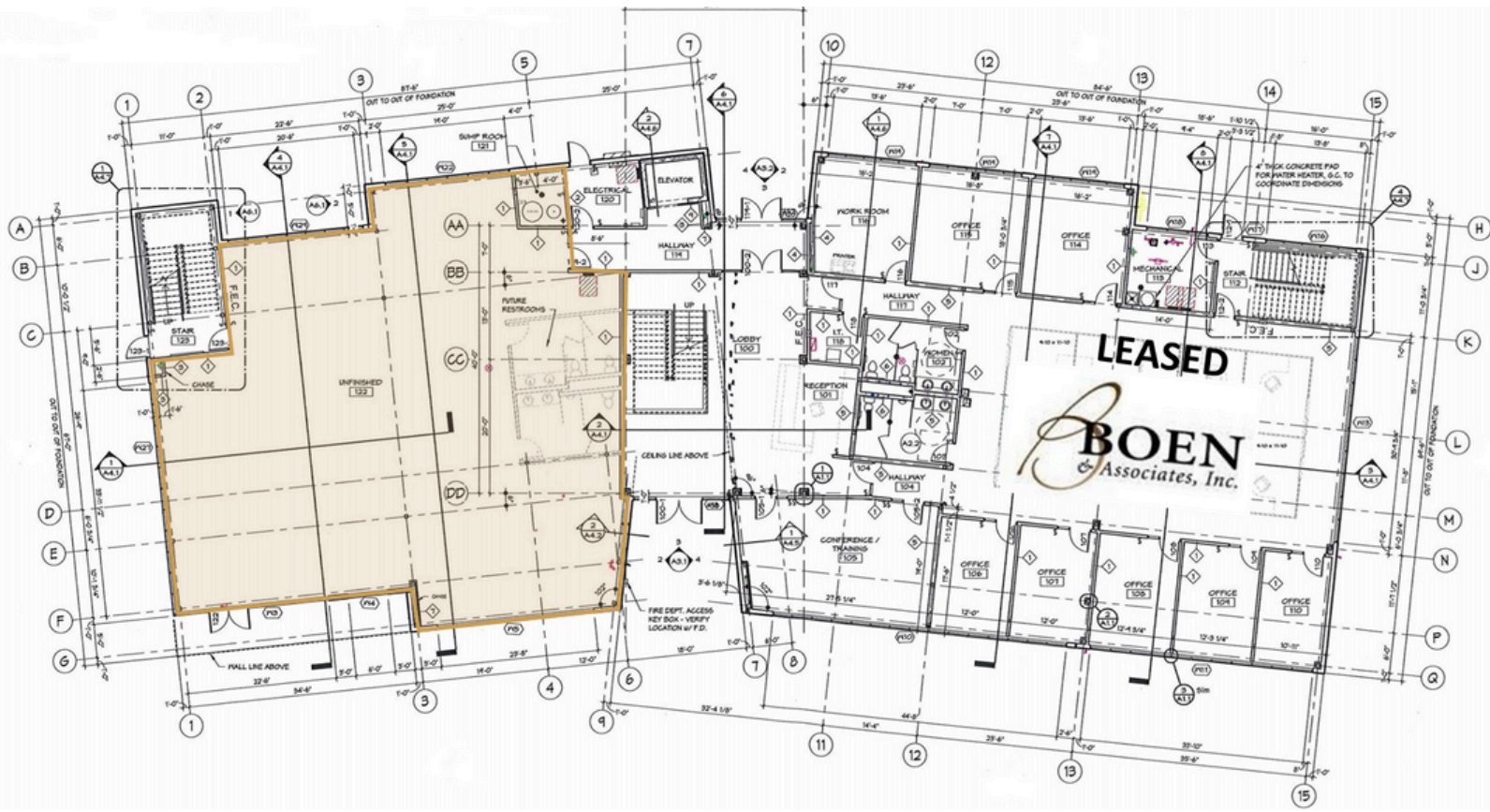
PERENNIAL PROPERTIES



OFFICE SPACE FOR LEASE



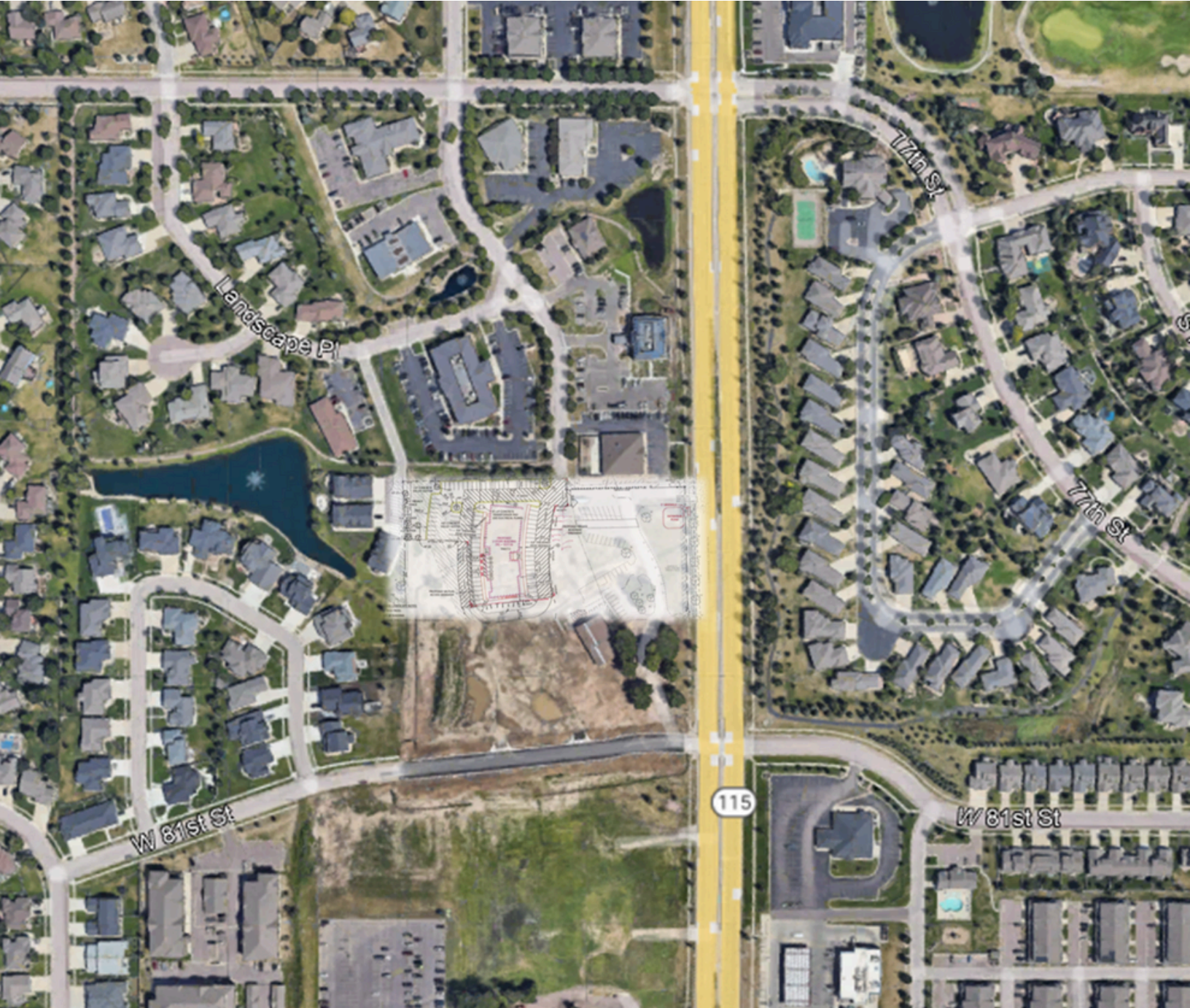
FIRST FLOOR



PERENNIAL PROPERTIES



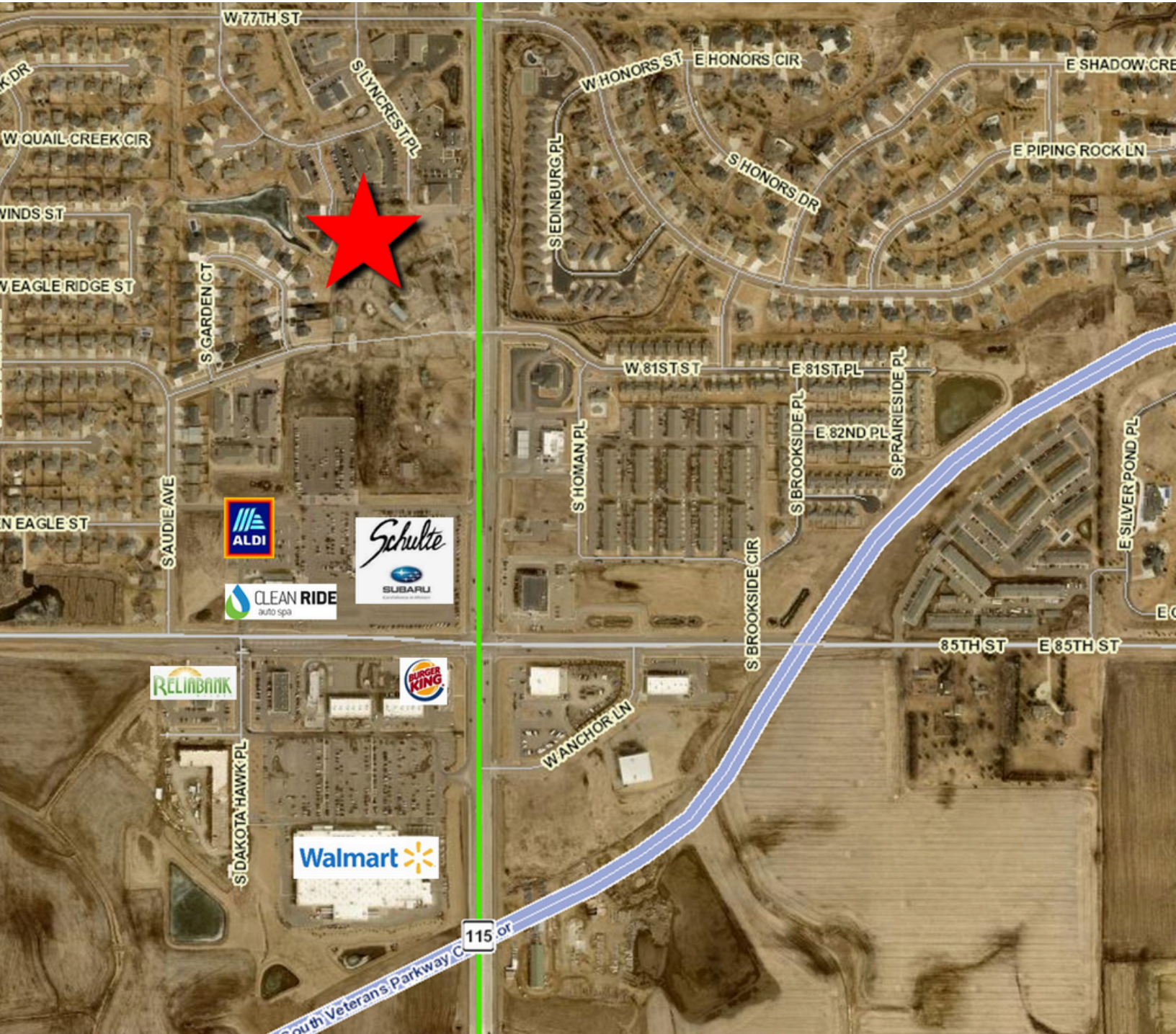
OFFICE SPACE FOR LEASE



PERENNIAL PROPERTIES



OFFICE SPACE FOR LEASE



PERENNIAL PROPERTIES



3-MILE DEMOGRAPHICS

Key Facts

KEY FACTS

54,069

Population



2.4

Average Household Size

37.3

Median Age

\$84,125

Median Household Income

EDUCATION

2.5%

No High School Diploma



19.4%

High School Graduate



27.4%

Some College/ Associate's Degree



50.7%

Bachelor's/Grad/ Prof Degree

BUSINESS



2,762

Total Businesses



34,824

Total Employees

EMPLOYMENT



74.9%

White Collar



13.2%

Blue Collar



11.8%

Services



1.2%

Unemployment Rate

INCOME



\$84,125

Median Household Income



\$49,119

Per Capita Income



\$259,268

Median Net Worth

2024 Households by income (Esri)

The largest group: \$100,000 - \$149,999 (19.5%)

The smallest group: \$15,000 - \$24,999 (3.9%)

Indicator ▲	Value	Diff	
<\$15,000	5.5%	+2.3%	
\$15,000 - \$24,999	3.9%	0	
\$25,000 - \$34,999	6.6%	+1.6%	
\$35,000 - \$49,999	11.7%	-1.3%	
\$50,000 - \$74,999	17.7%	-0.9%	
\$75,000 - \$99,999	10.9%	-1.7%	
\$100,000 - \$149,999	19.5%	-1.2%	
\$150,000 - \$199,999	10.1%	-1.6%	
\$200,000+	14.2%	+3.1%	

Bars show deviation from Lincoln County