



BOYCE PARK | SIOUX FALLS, SOUTH DAKOTA

Bender
COMMERCIAL

Price:
Contact Broker

Address:
Maple Street & Marion Road, Sioux Falls

BOYCE PARK

LOCATION

Maple Street & Marion Road
Sioux Falls, SD

LAND SIZE

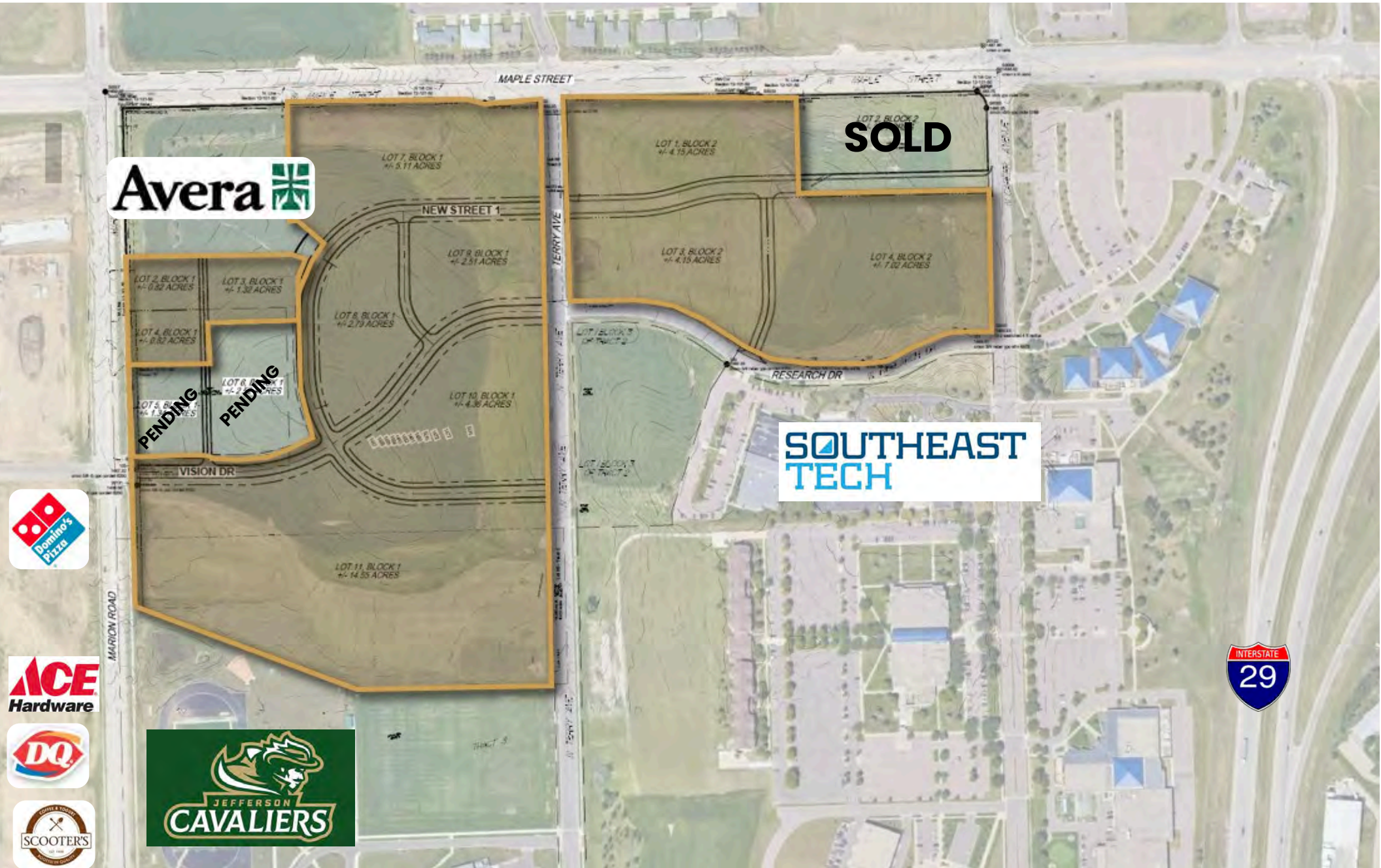
47.60 AC Total
0.82 - 14.55 AC

ZONING

C-2 Commercial: 9.26 AC
C-3 Commercial: 2.96 AC
Office: 11.17 AC
Live/Work: 24.21 AC

- Boyce Park offers Commercial, Office and Live-Work zoned land.
- Lot size can be adjusted to fit Buyer's needs.
- Utilities stubbed to the property line.
- Research Drive to be completed Q2 2025.
- Strategically located near Southeast Technical College and Jefferson High School.
- Easy access to I-29 at Maple Street interchange.
- Contact broker for covenants and restrictions.





CONCEPT PLAN

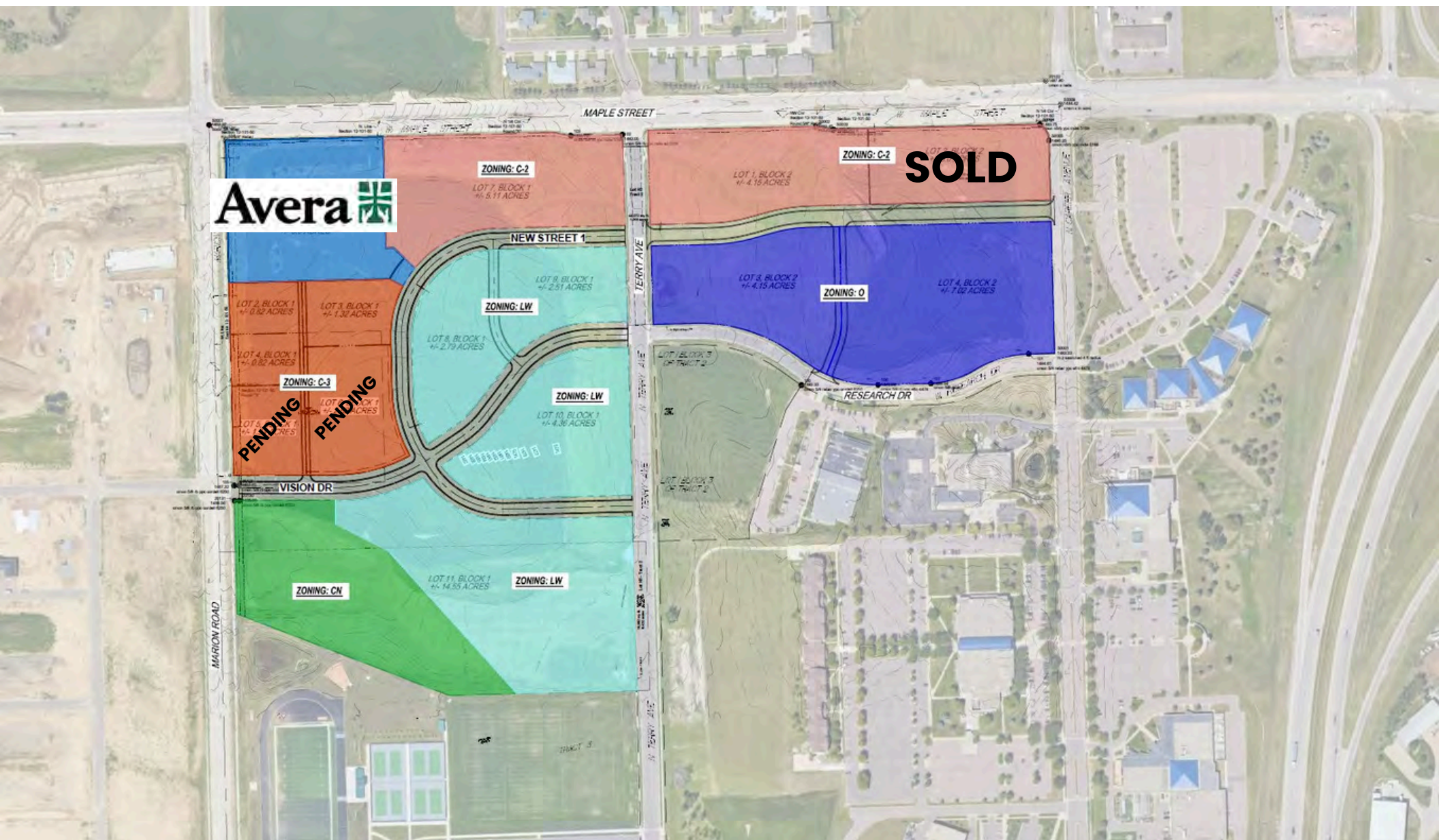
(subject to change)

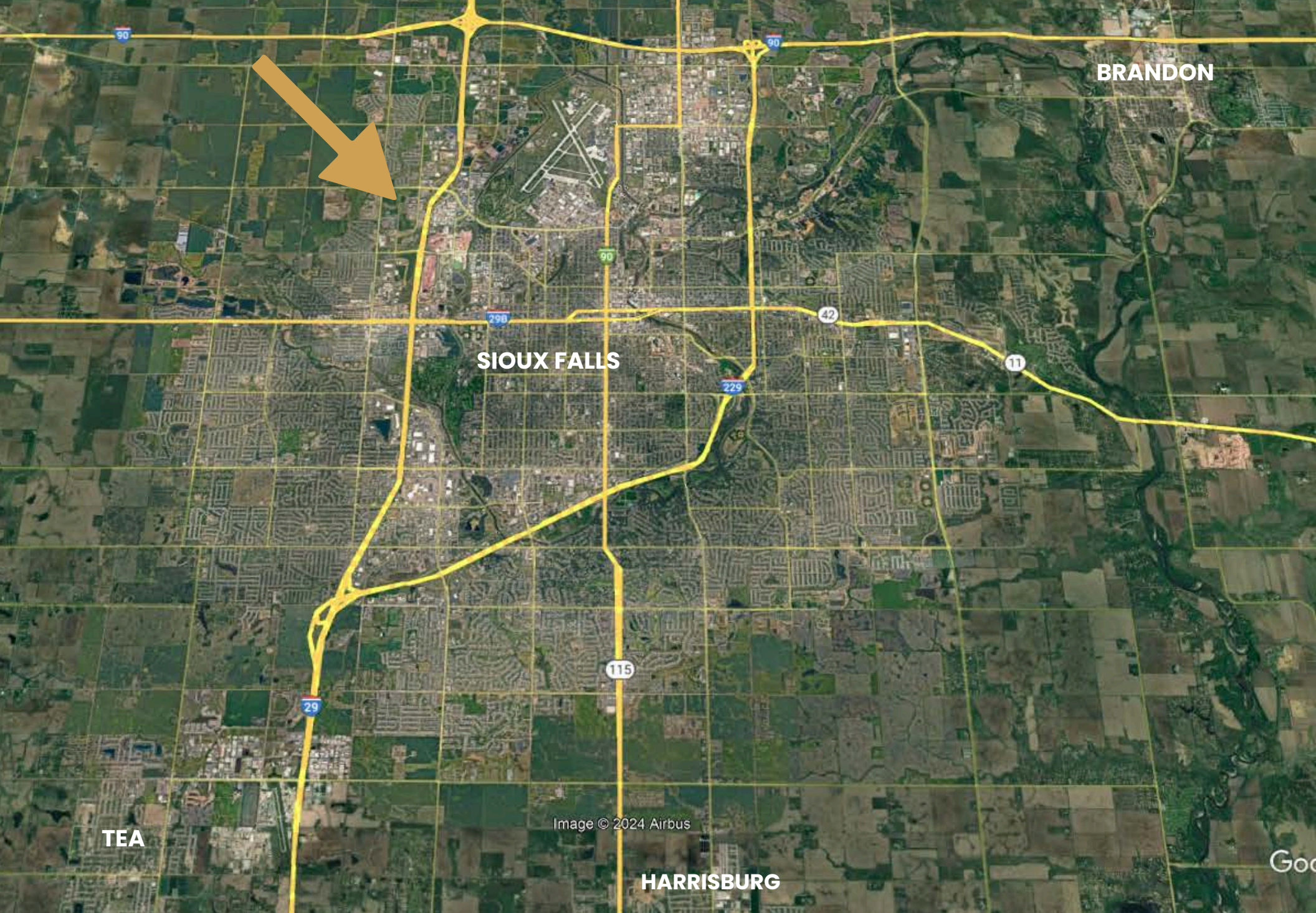


MASTER PLAN RENDER



ZONING MAP





BRANDON

SIoux FALLS

TEA

Image © 2024 Airbus

HARRISBURG





Bradyn Neises, SIOR

bradyn@benderco.com

605-579-0189



Michael Bender, CCIM, SIOR

michael@benderco.com

605-782-1662

Bender
COMMERCIAL



TRUSTED ADVISORS SINCE 1997

305 WEST 57TH STREET | SIOUX FALLS, SD | 605-336-7600 | BENDERCO.COM

Information herein deemed reliable, but not guaranteed.