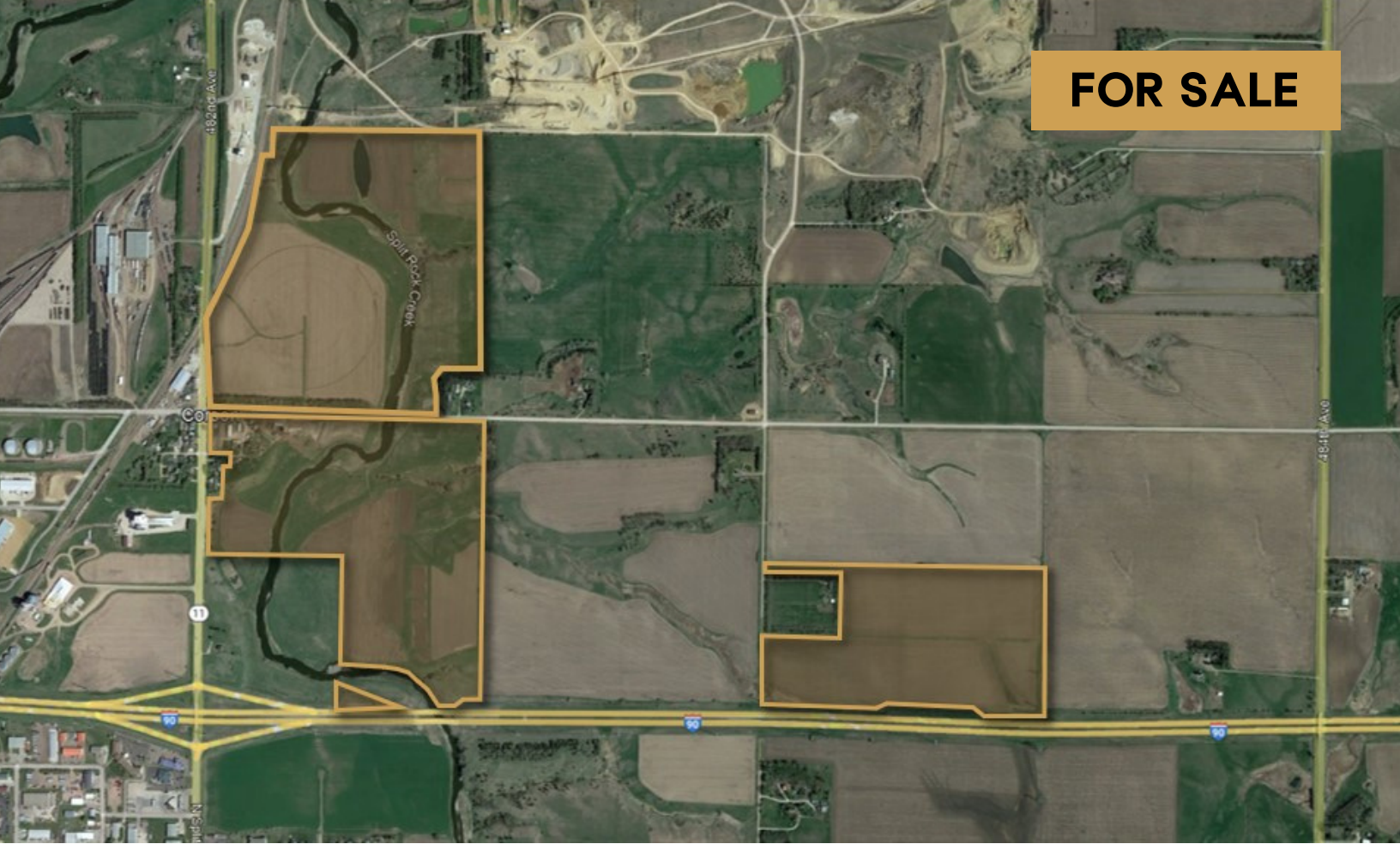


FOR SALE



JOHNSON BRANDON LAND

TILLABLE/DEVELOPMENT LAND

Bender
COMMERCIAL

 **HIGHWAY 11 & I-90**
BRANDON, SD



316.10 ACRES

\$ \$22,000/ACRE

- Over 300 acres available north of Brandon with frontage along Highway 11 and I-90.
- Six (6) housing eligibilities.
- Currently zoned Agricultural.
- Portions of property are tillable and irrigated.
- West parcels contain floodplain - contact broker for details.
- Brandon/Minnehaha County joint jurisdiction for platting only.
- Real Estate Taxes: \$5,956.60 (2022 due and payable in 2023).

ROB FAGNAN, SIOR
rob@benderco.com
605-782-1672

REGGIE KUIPERS, SIOR
reggie@benderco.com
605-782-1663



Bender Commercial Real Estate Services | 305 West 57th Street | Sioux Falls, SD 57108 | 605-336-7600 | benderco.com

© 2024, Bender Companies. Information herein deemed reliable, but not guaranteed.

JOHNSON BRANDON LAND



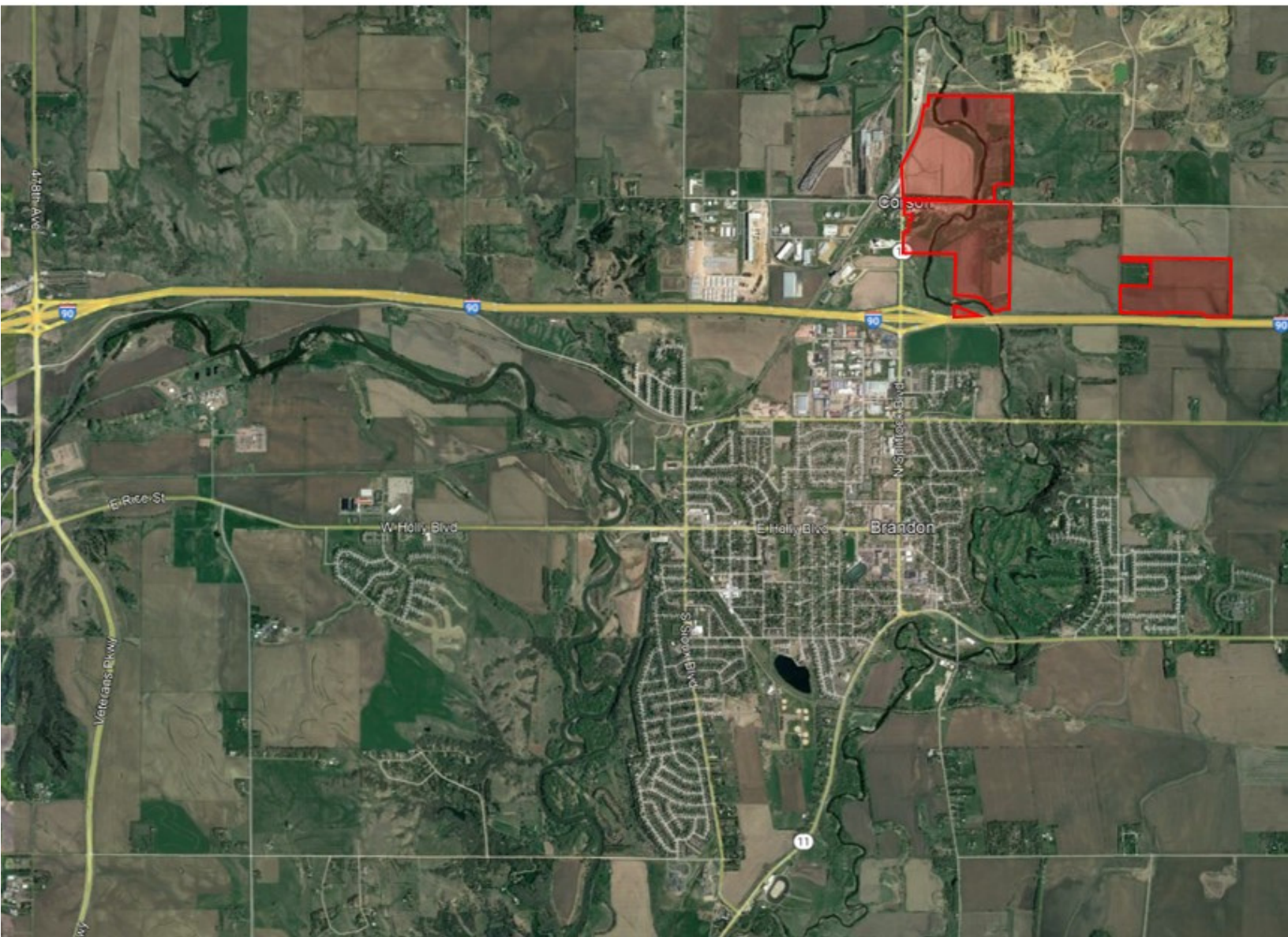
TILLABLE/DEVELOPMENT LAND



JOHNSON BRANDON LAND



TILLABLE/DEVELOPMENT LAND



JOHNSON BRANDON LAND



TILLABLE/DEVELOPMENT LAND

