

FOR SALE

W Madison St

W Madison St

N La Mesa Dr

MADISON & LA MESA LAND

OPPORTUNITY ZONE MULTI-FAMILY LAND

Bender
COMMERCIAL



MADISON STREET & LA MESA DRIVE
SIOUX FALLS, SD



9.45 AC +/-



\$2.75/SF

- Development land located on the southeast corner of Madison Street and La Mesa Drive in growing northwest area of Sioux Falls.
- I-29 Madison interchange is less than 1.5 miles away - quick access to Interstate.
- A portion of the property is located in the floodplain - contact broker for details.
- Currently zoned RR rural residential with potential to be rezoned to multi-family.

NICK GUSTAFSON, CCIM

nick@benderco.com

605-782-1668

REGGIE KUIPERS, SIOR

reggie@benderco.com

605-782-1663



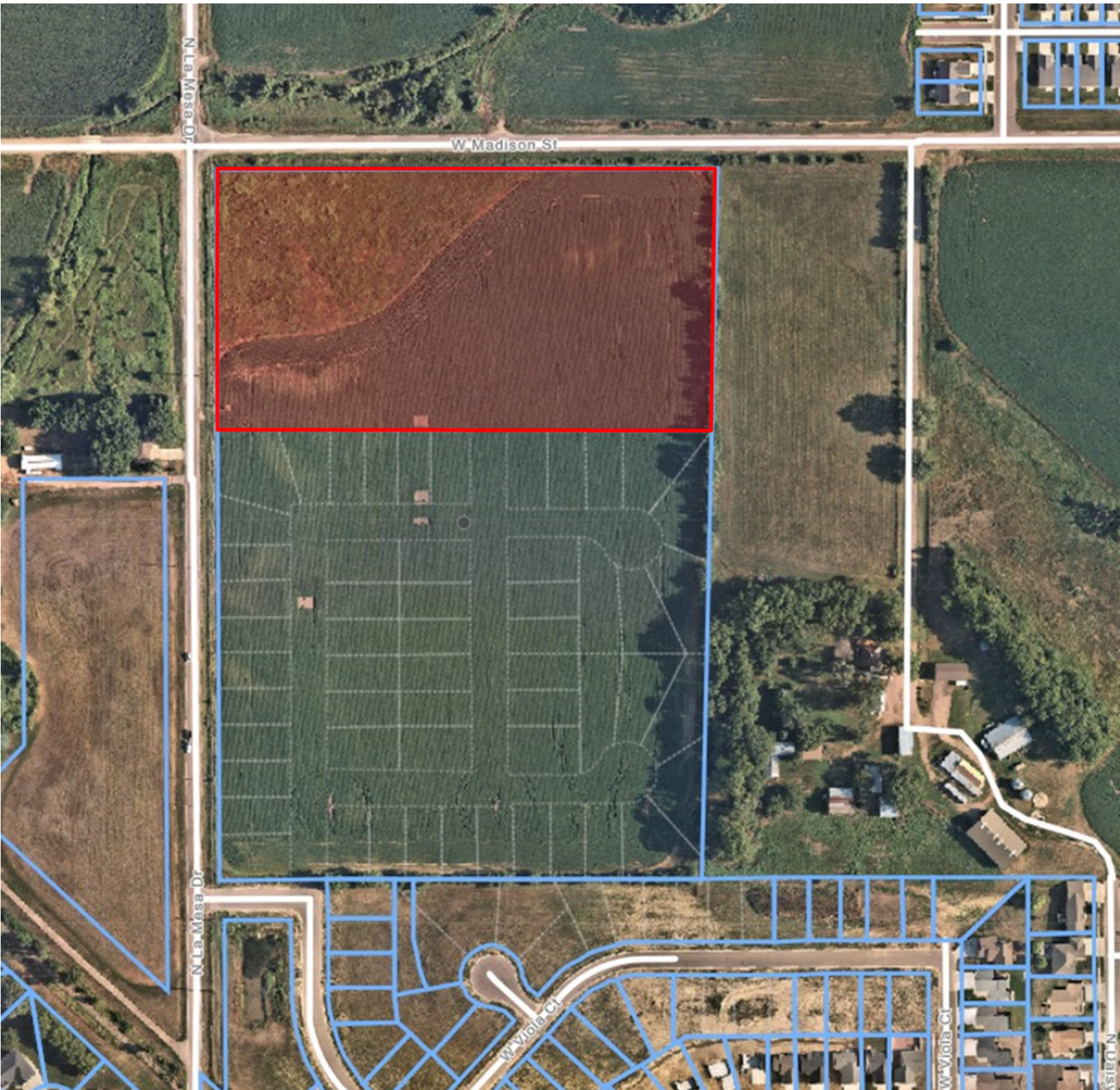
Bender Commercial Real Estate Services | 305 West 57th Street | Sioux Falls, SD 57108 | 605-336-7600 | benderco.com

© 2023 Bender Companies. Information herein deemed reliable, but not guaranteed.

MADISON & LA MESA LAND



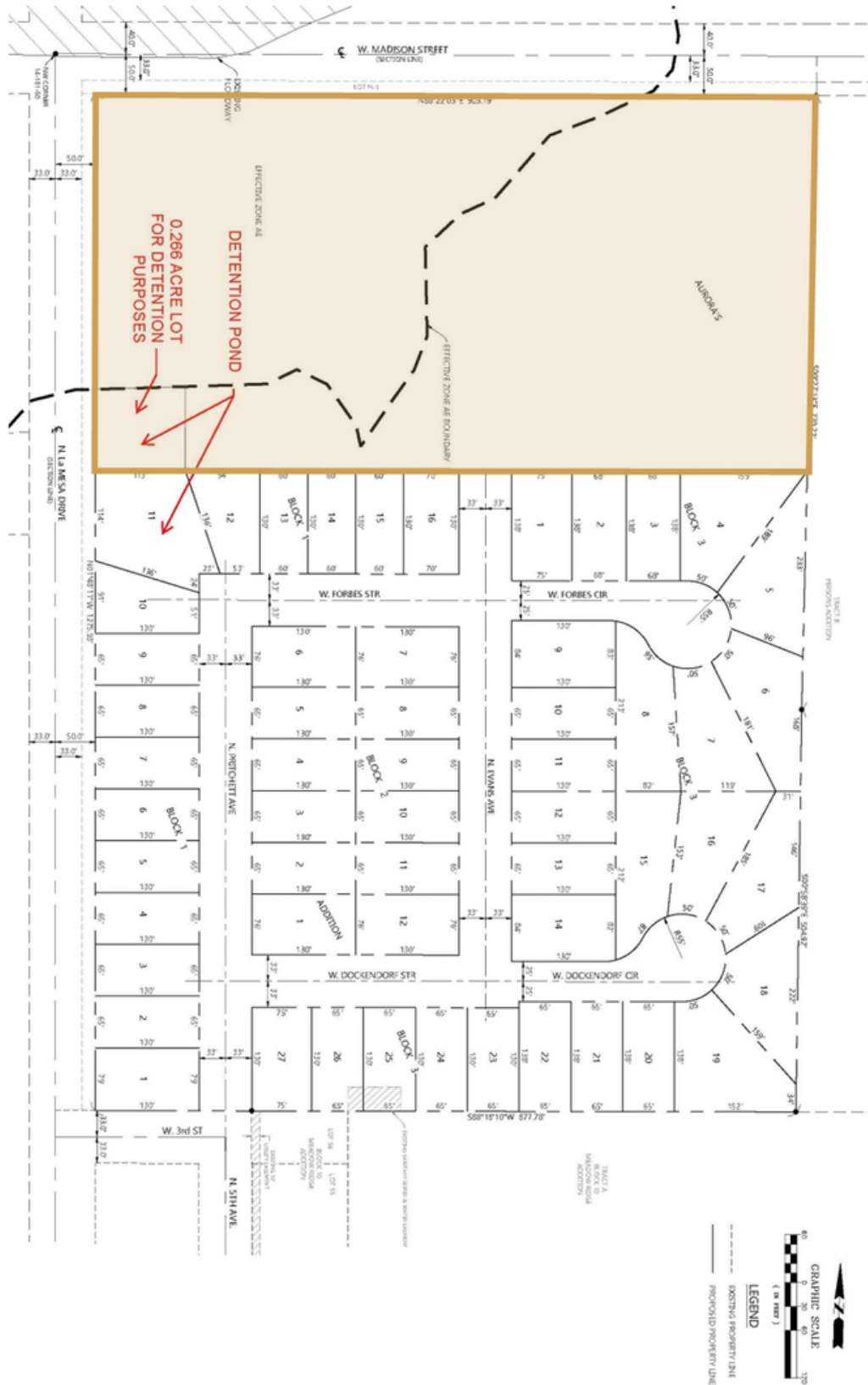
OPPORTUNITY ZONE MULTI-FAMILY LAND



MADISON & LA MESA LAND



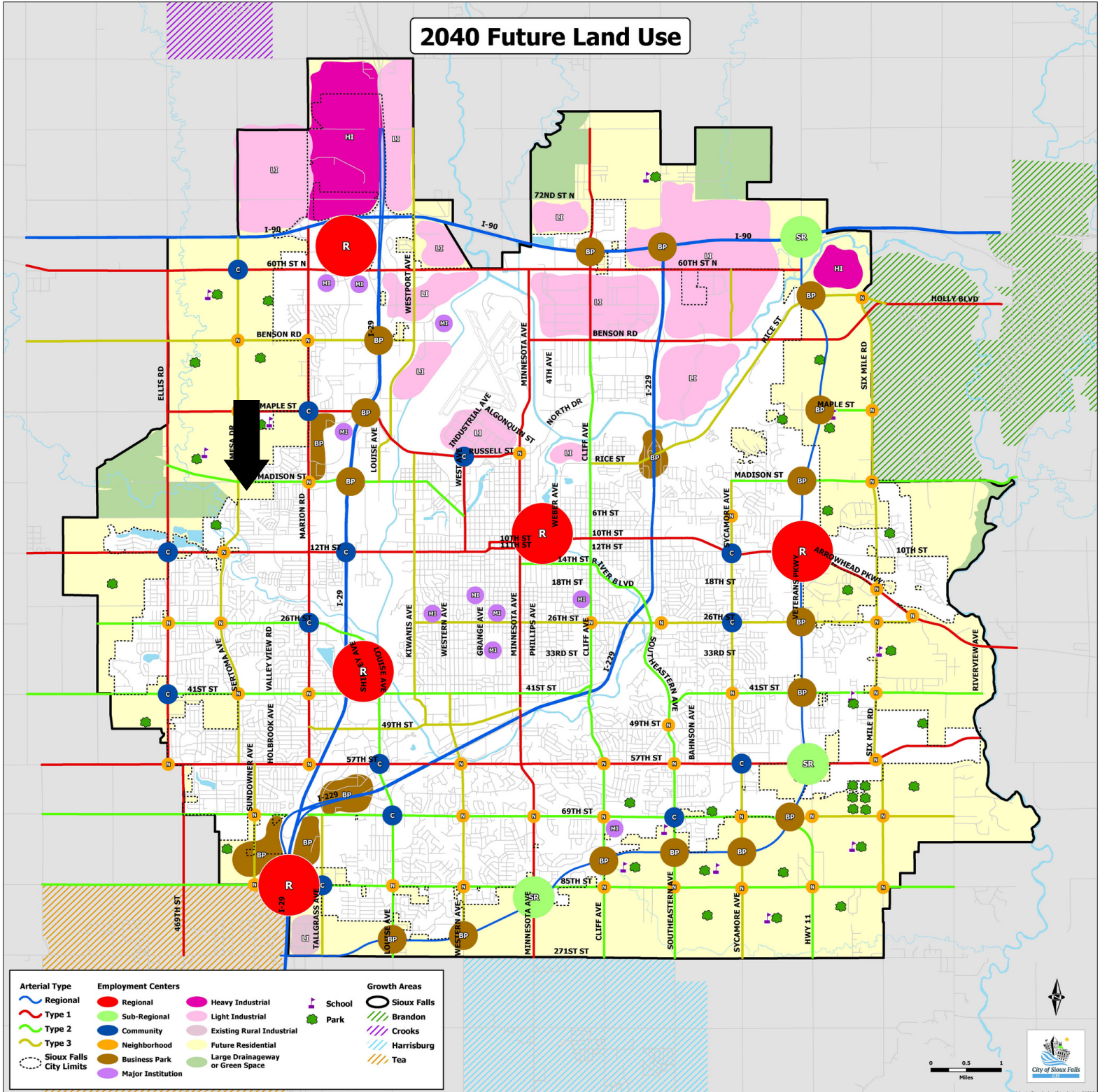
OPPORTUNITY ZONE MULTI-FAMILY LAND



MADISON & LA MESA LAND



OPPORTUNITY ZONE MULTI-FAMILY LAND



MADISON & LA MESA LAND



OPPORTUNITY ZONE MULTI-FAMILY LAND

