

**FOR SALE**



# MAPLE ROCK C-STORE SITE

COMMERCIAL LAND

**Bender**  
COMMERCIAL



**BISON TRAIL & SOUTHEASTERN AVENUE  
SIOUX FALLS, SD**



**2.25 ACRES**



**\$15.00/SF**

- Commercial land located on the northeast corner of Bison Trail and Southeastern Avenue.
- New Harrisburg East Middle School located across the street.
- Access from Bison Trail.
- Quick access to future SD 100 (South Veterans Parkway).
- Covenants and restrictions apply - contact broker for details.

**ALEX SOUNDY, SIOR**

[alex@benderco.com](mailto:alex@benderco.com)  
605-376-3700

**REGGIE KUIPERS, SIOR**

[reggie@benderco.com](mailto:reggie@benderco.com)  
605496-2966



Bender Commercial Real Estate Services | 305 West 57th Street | Sioux Falls, SD 57108 | 605-336-7600 | [benderco.com](http://benderco.com)

© 2024 Bender Companies. Information herein deemed reliable, but not guaranteed.



# MAPLE ROCK C-STORE SITE



## COMMERCIAL LAND

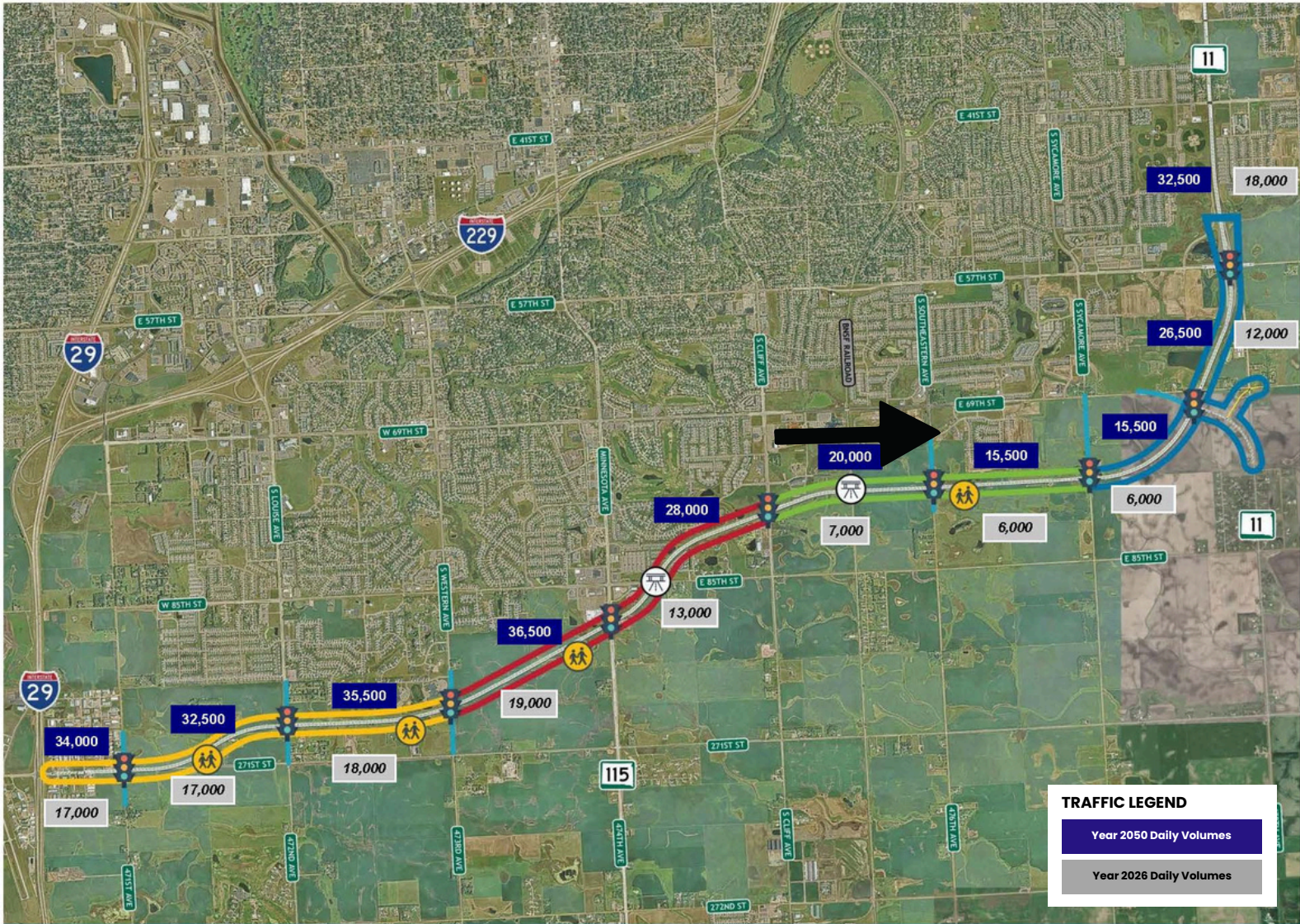




# MAPLE ROCK C-STORE SITE



## COMMERCIAL LAND



**TRAFFIC LEGEND**

- Year 2050 Daily Volumes
- Year 2026 Daily Volumes

SIoux FALLS | SD DOT | MPO | U.S. Department of Transportation Federal Highway Administration | CONNECT@SOUTHVETERANSPARKWAY.COM



# MAPLE ROCK C-STORE SITE



## COMMERCIAL LAND

