

FOR SALE

MAPLE ROCK C-STORE SITE

COMMERCIAL LAND

Bender
COMMERCIAL



BISON TRAIL & SOUTHEASTERN AVENUE
SIOUX FALLS, SD



2.25 ACRES



\$13.00/SF

- Commercial land located on the northeast corner of Bison Trail and Southeastern Avenue.
- New Harrisburg East Middle School (set to open Fall 2023) located across the street.
- Access from Bison Trail.
- Quick access to future SD 100 (South Veterans Parkway).
- Access via private drive.
- Perfect for owner-occupied commercial/office user.
- Choose your own builder or build-to-suit options available.
- Covenants and restrictions apply - contact broker for details.

ALEX SOUNDY

alex@benderco.com

605-681-8351

REGGIE KUIPERS, SIOR

reggie@benderco.com

605-782-1663



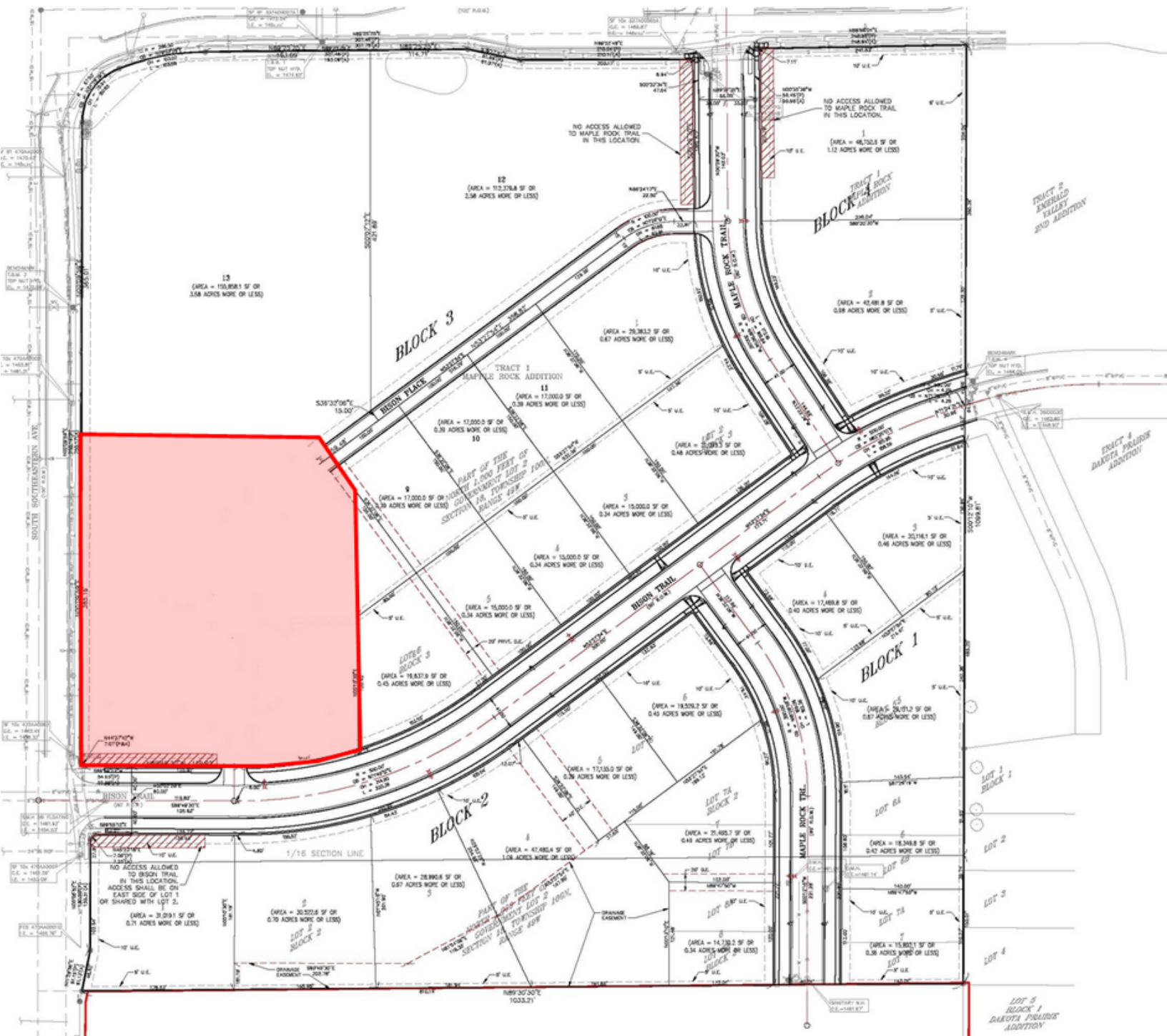
Bender Commercial Real Estate Services | 305 West 57th Street | Sioux Falls, SD 57108 | 605-336-7600 | benderco.com

© 2023 Bender Companies. Information herein deemed reliable, but not guaranteed.

MAPLE ROCK C-STORE SITE



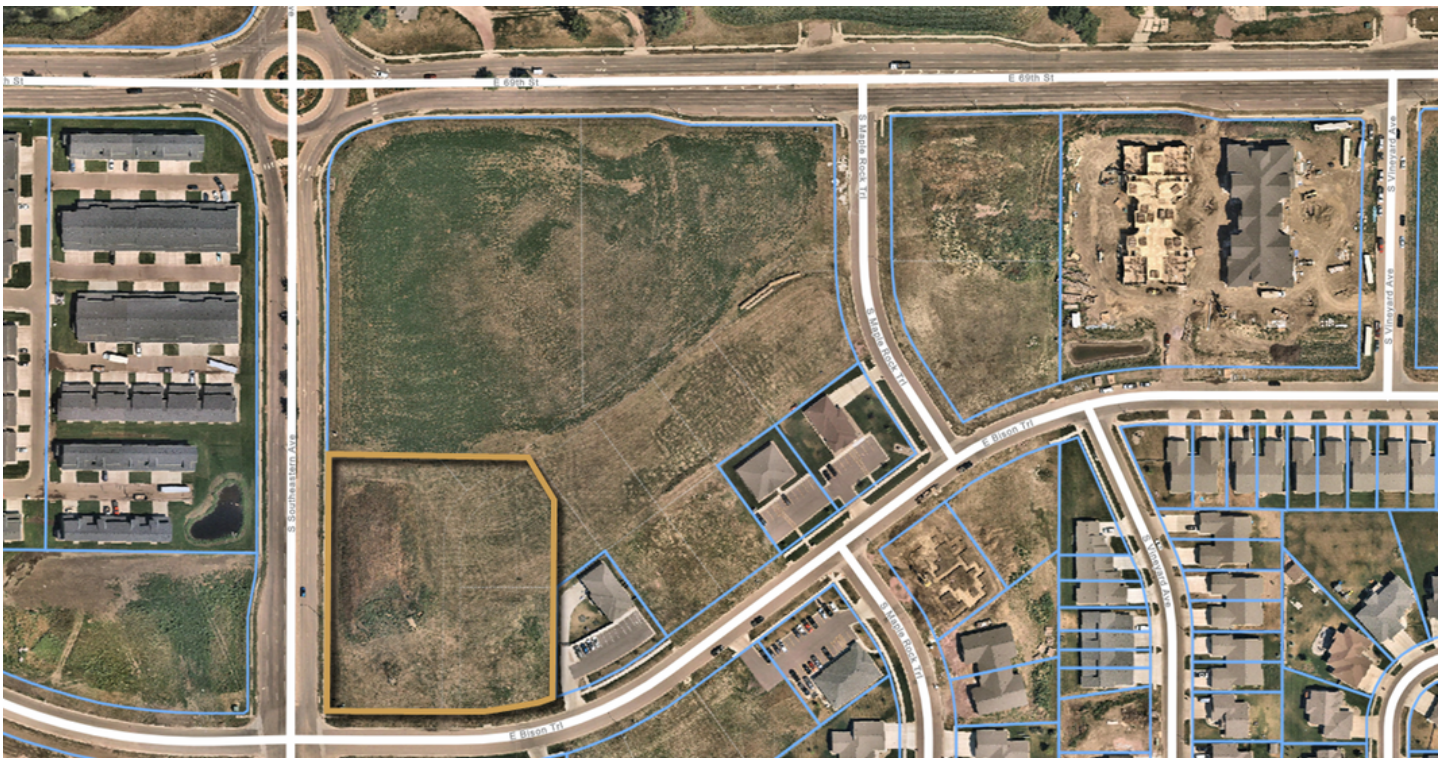
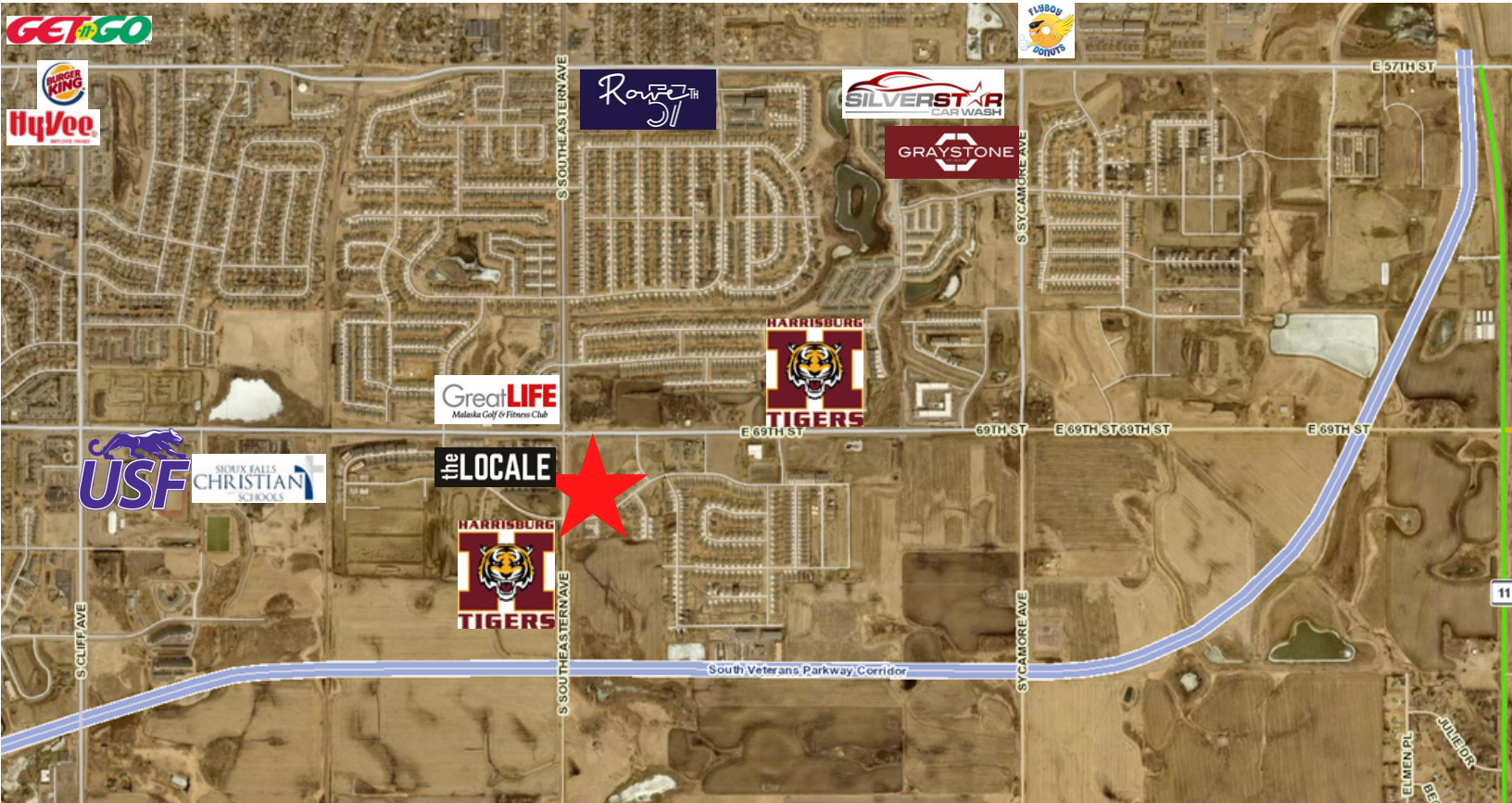
COMMERCIAL LAND



MAPLE ROCK C-STORE SITE



COMMERCIAL LAND



Bender Commercial Real Estate Services | 305 West 57th Street | Sioux Falls, SD 57108 | 605-336-7600 | benderco.com

2023 Bender Companies. Information herein deemed reliable, but not guaranteed.