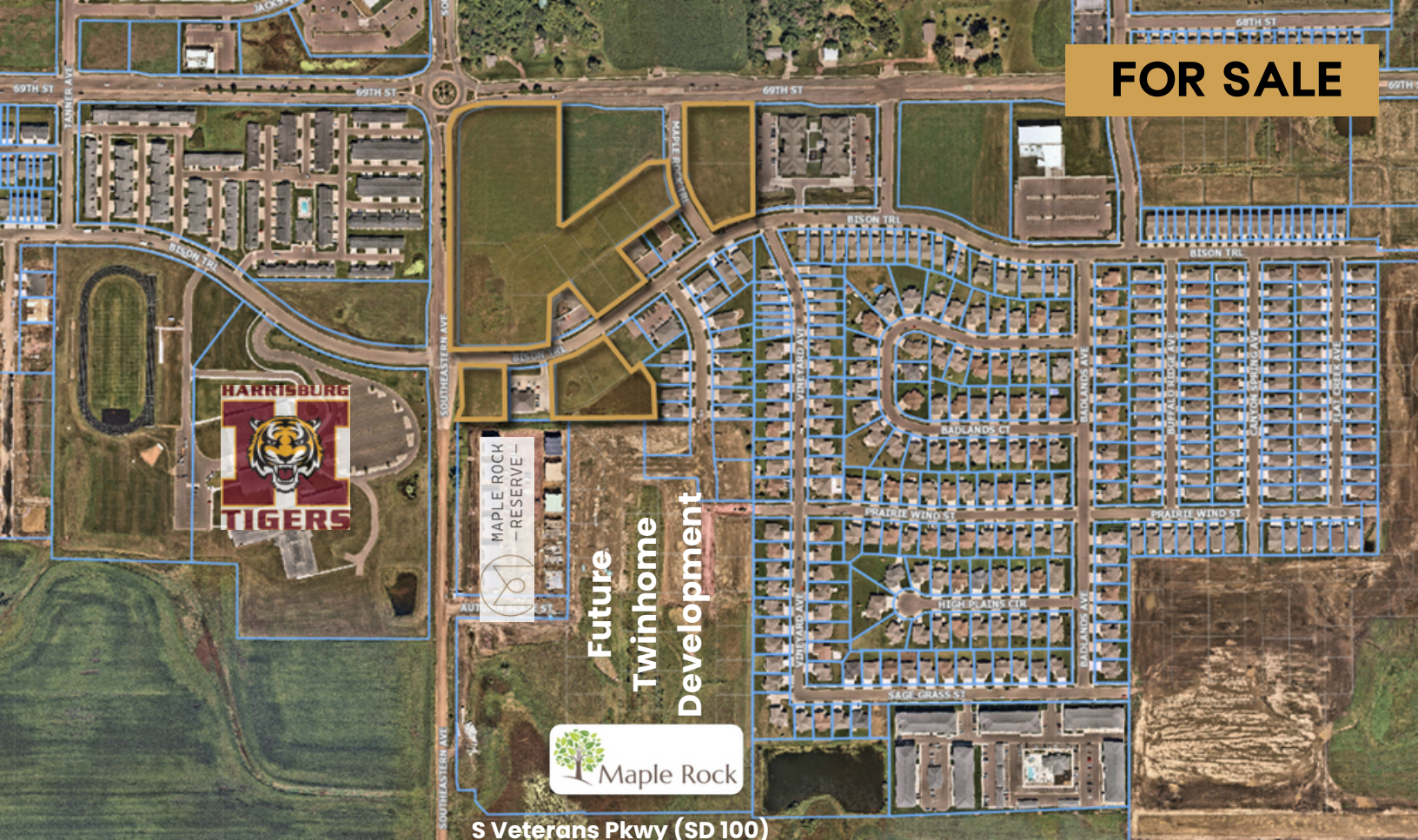


FOR SALE



69TH & SOUTHEASTERN LAND

MAPLE ROCK DEVELOPMENT

Bender
COMMERCIAL



6200 SOUTH SOUTHEASTERN AVE
SIoux FALLS, SD



0.34 TO 3.58 ACRES



\$ \$8.00 - \$18.00/SF

- Commercial and office land located on the southeast corner of 69th Street and Southeastern Avenue.
- Various Lot sizes available.
- 10.33 AC of C-2 Commercial land ranging from 0.34 - 3.58 acres.
- NE Corner of Bison Trail & Southeastern Avenue can be configured to a 2.25 AC C-Store user.
- 3.55 AC of Office zoned land ranging from 0.34 - 1.09 acres
- Access into development via 69th Street and Southeastern Avenue.
- Easy access to proposed SD 100 (South Veterans Parkway).
- Perfect for small owner-occupied office users. Choose your own builder or build-to-suit options available.
- Covenants and restrictions apply - contact broker for details.

ALEX SOUNDY, SIOR

alex@benderco.com

605-376-3700

REGGIE KUIPERS, SIOR

reggie@benderco.com

605-496-2966



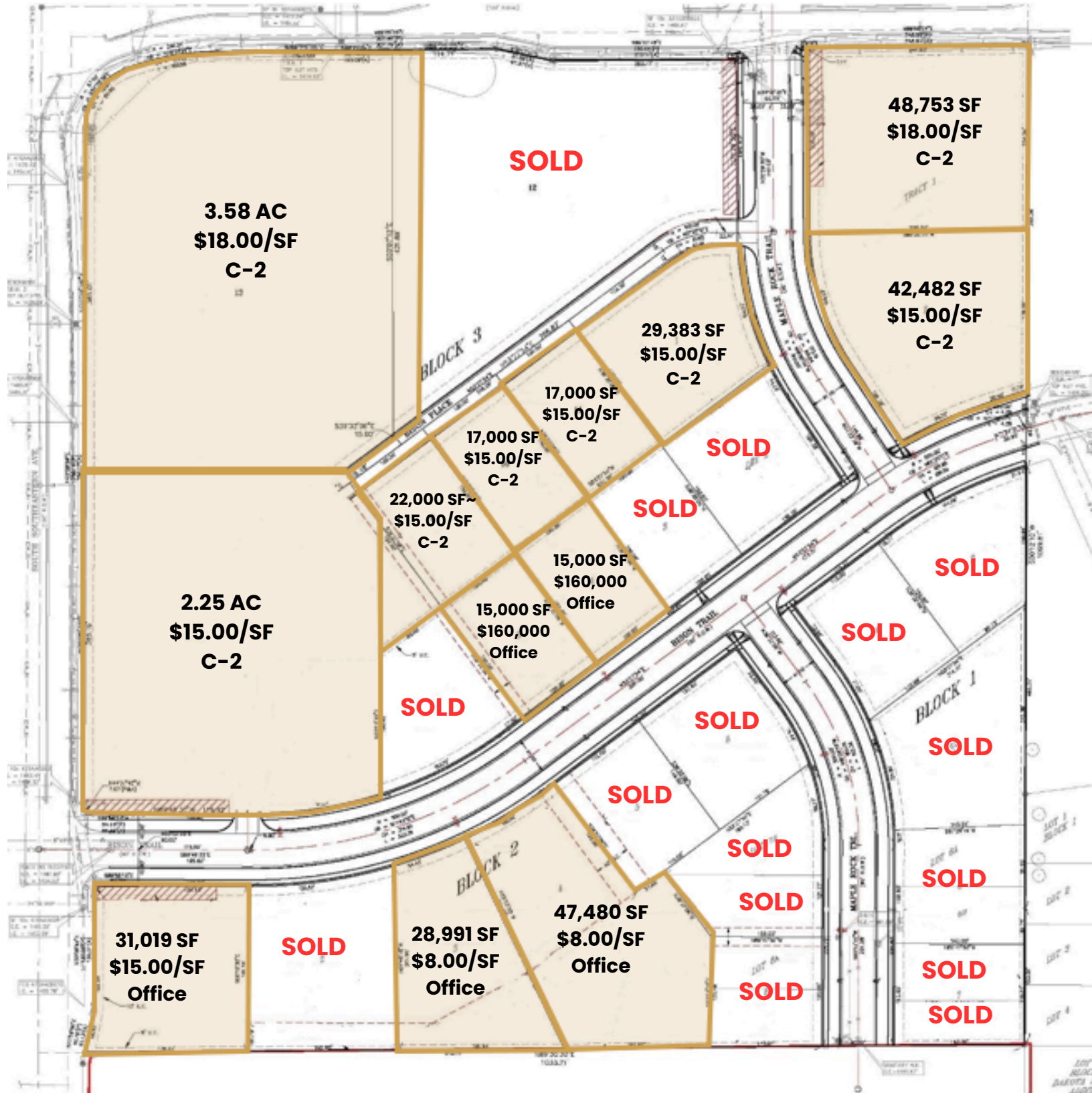
Bender Commercial Real Estate Services | 305 West 57th Street | Sioux Falls, SD 57108 | 605-336-7600 | benderco.com

© 2025 Bender Companies. Information herein deemed reliable, but not guaranteed.

MAPLE ROCK DEVELOPMENT



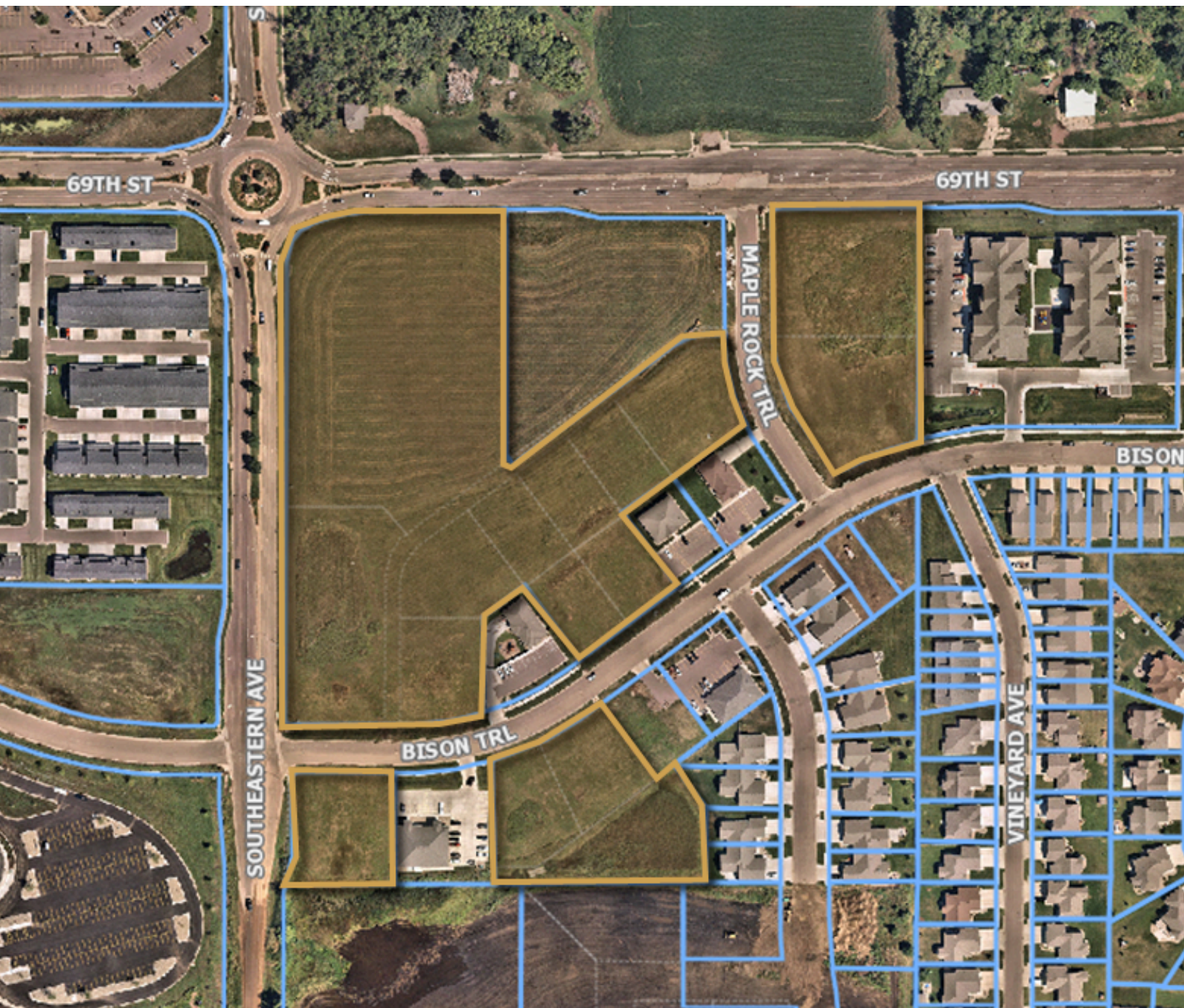
COMMERCIAL & OFFICE LAND



MAPLE ROCK DEVELOPMENT



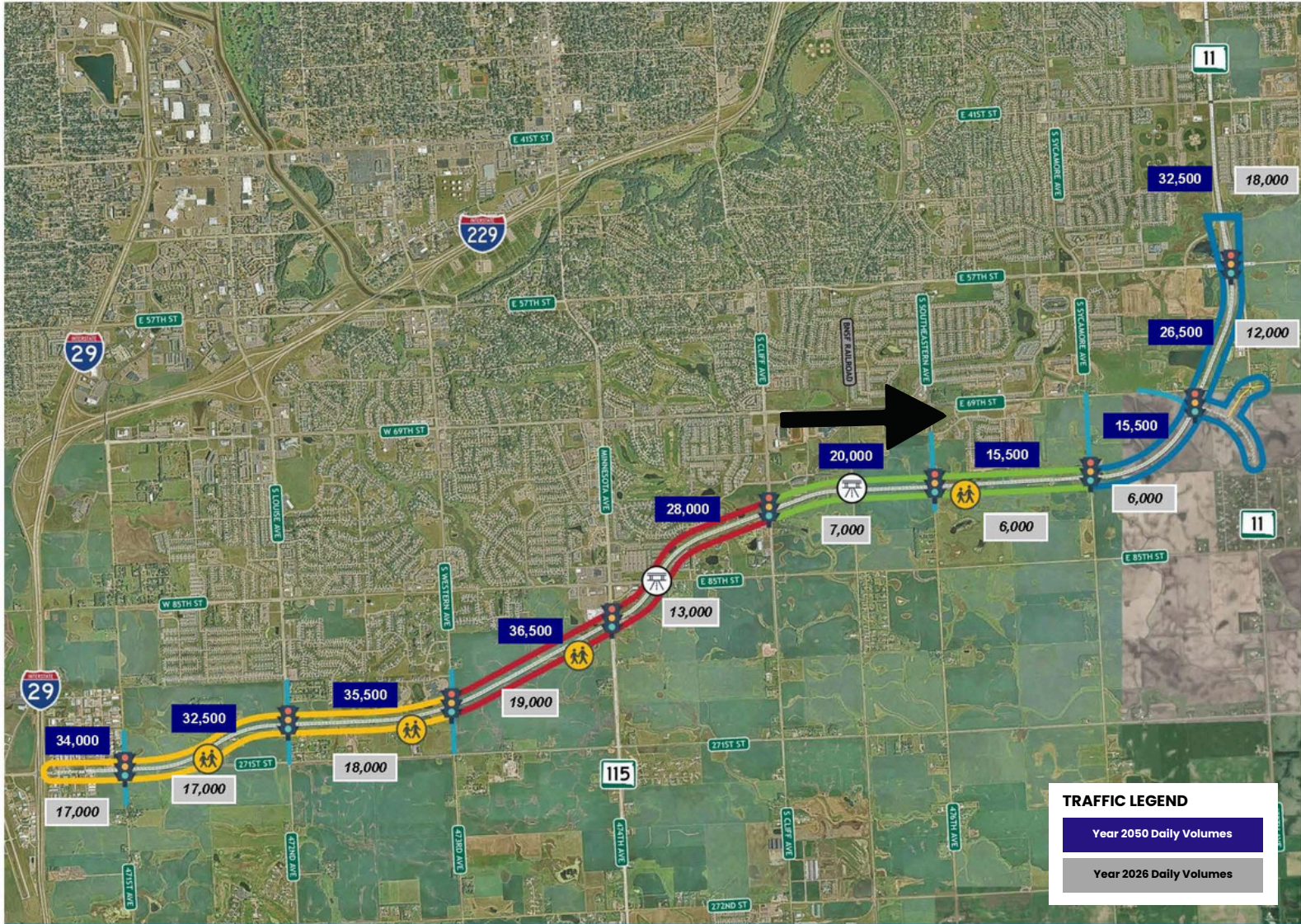
COMMERCIAL & OFFICE LAND



MAPLE ROCK DEVELOPMENT




SOUTH VETERANS PARKWAY









MAPLE ROCK DEVELOPMENT



COMMERCIAL & OFFICE LAND

