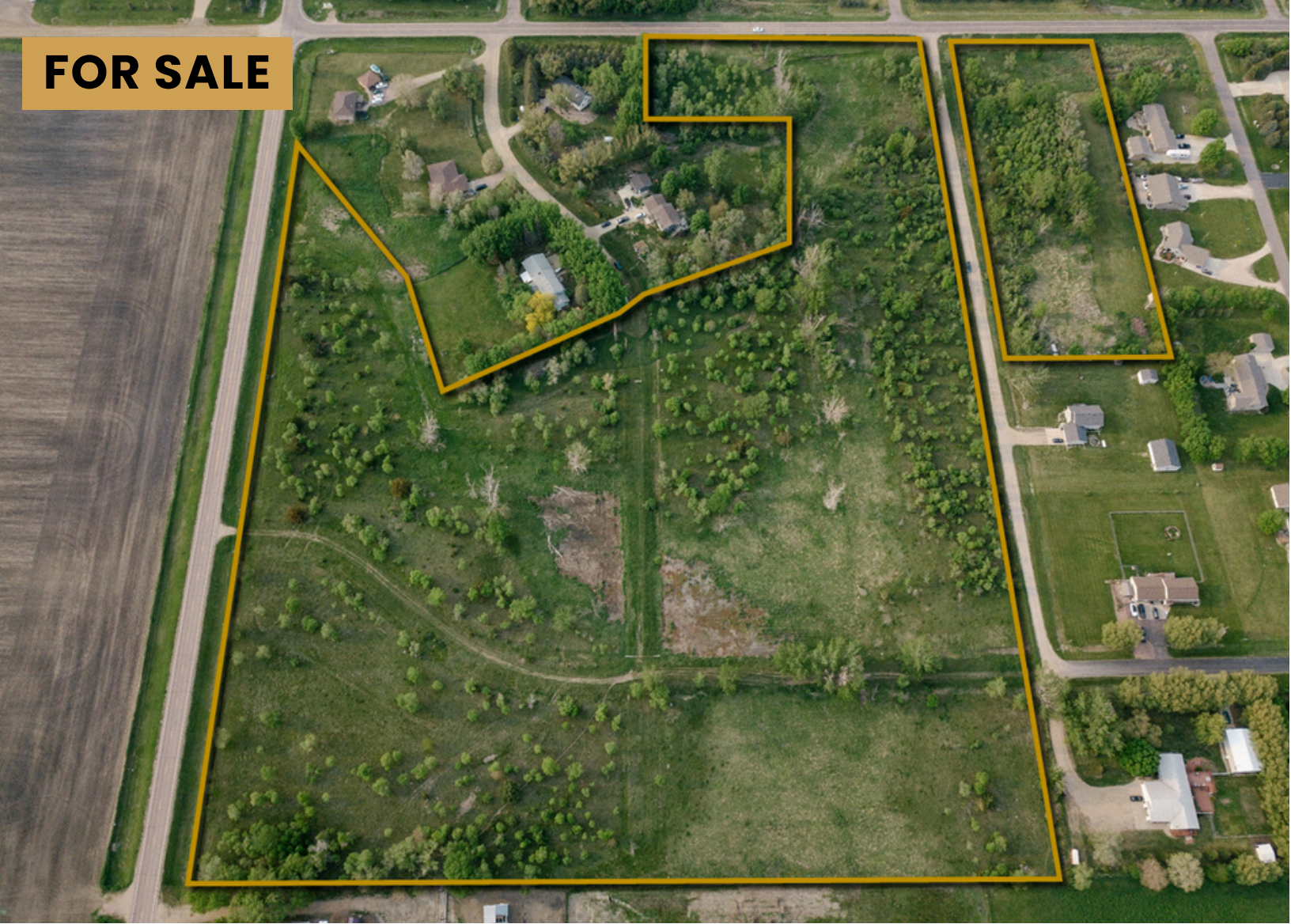


FOR SALE



NEW EARTH LAND

RURAL RESIDENTIAL DEVELOPMENT LAND

Bender
COMMERCIAL



273RD STREET & 469TH AVENUE
TEA, SD



26.2 ACRES +/-



\$ 935,000

- Residential rural development land located south of Tea.
- Currently parceled as 20 individual lots. Zoned A-1 Agriculture.
- Quick access to I-29 via Exit 71.
- Tea school district.
- Located approximately 1/2 mile from Tea and 3 miles from Sioux Falls.
- Any interested purchaser should independently verify utilities.
- 2023 appraisal available upon request with a signed NDA.

ROB KURTENBACH | rk@benderco.com | 605-940-0559



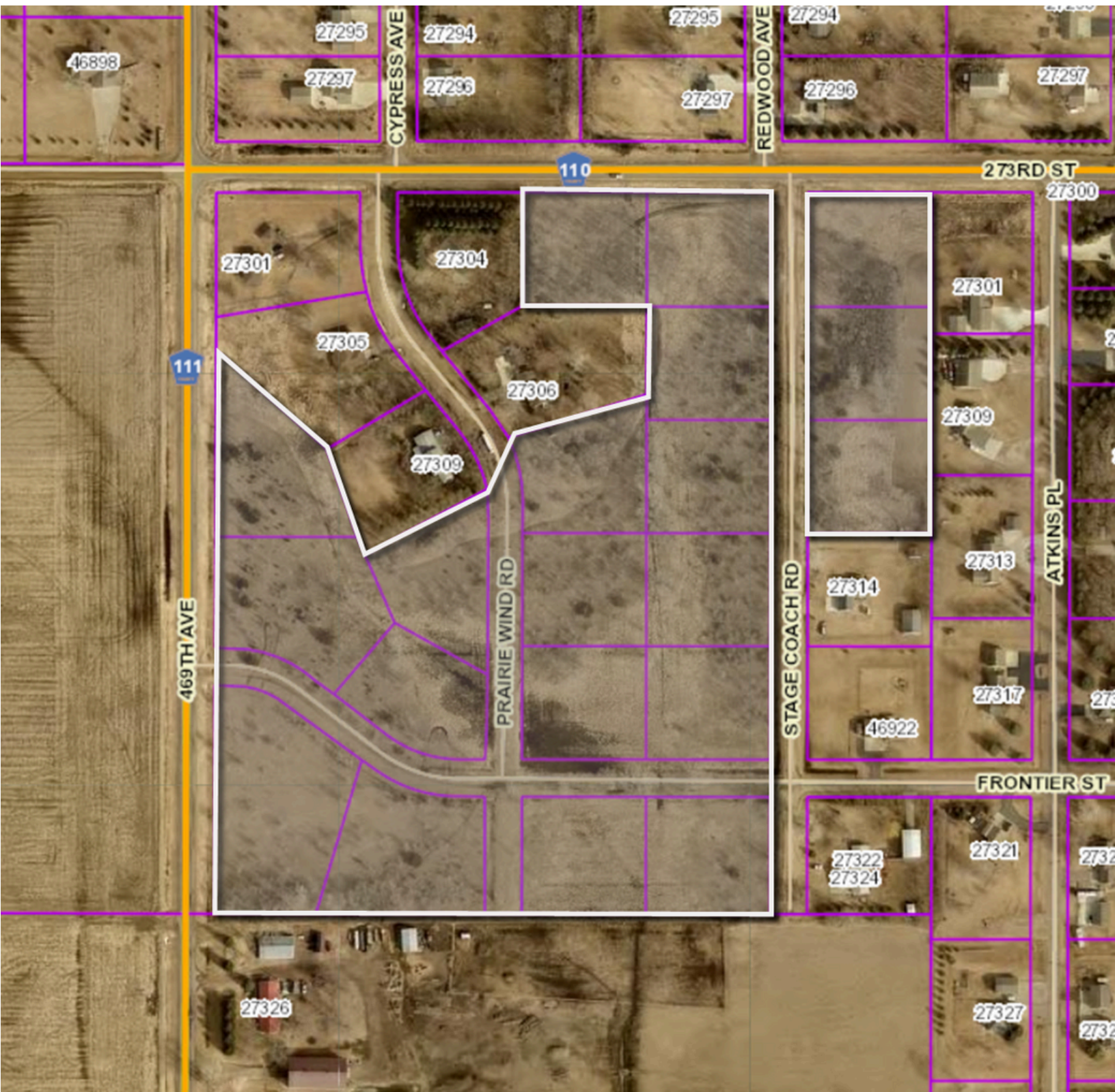
Bender Commercial Real Estate Services | 305 West 57th Street | Sioux Falls, SD 57108 | 605-336-7600 | benderco.com

© 2024 Bender Companies. Information herein deemed reliable, but not guaranteed.

NEW EARTH LAND



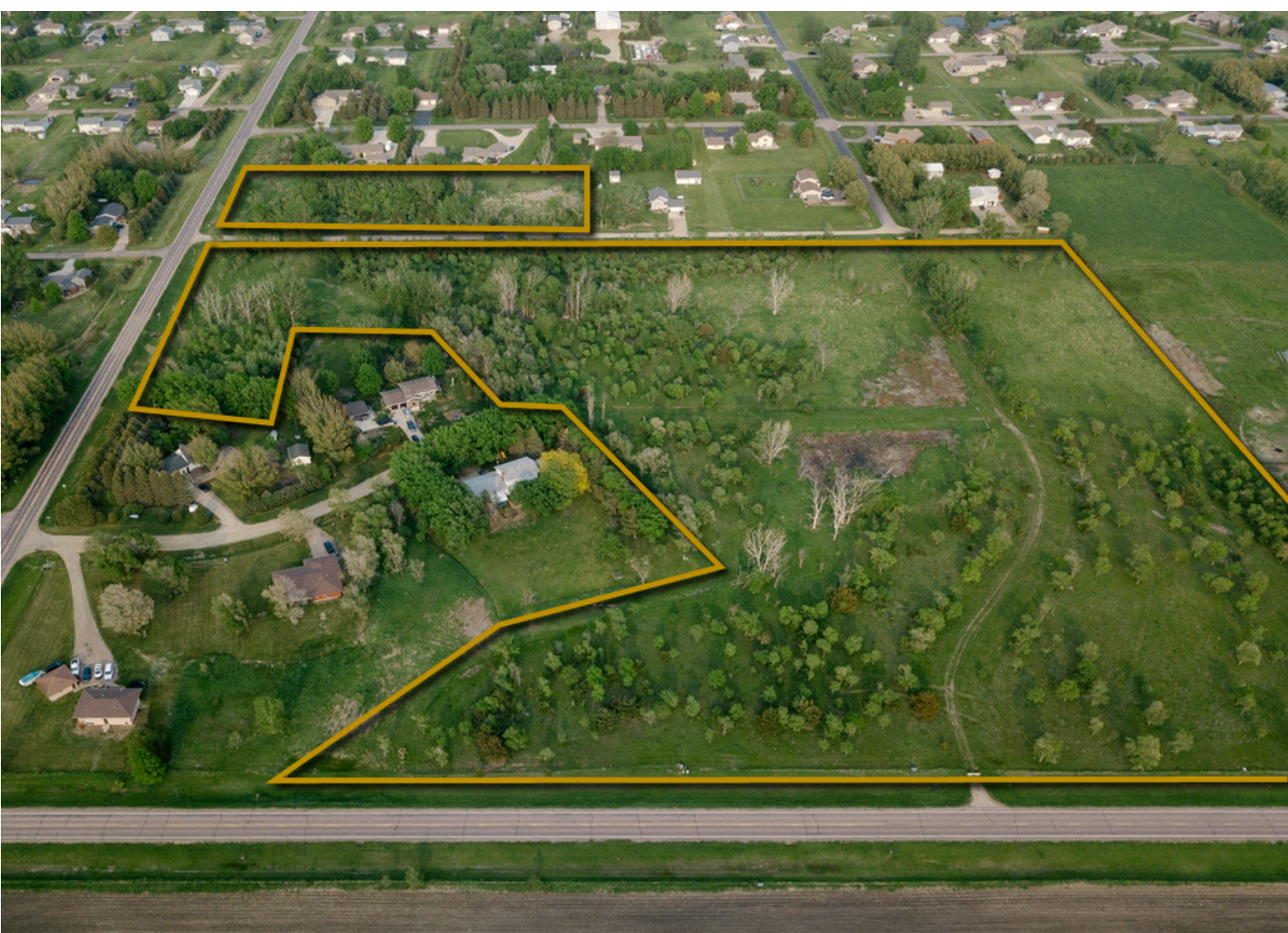
RURAL RESIDENTIAL DEVELOPMENT LAND



NEW EARTH LAND



RURAL RESIDENTIAL DEVELOPMENT LAND



NEW EARTH LAND



RURAL RESIDENTIAL DEVELOPMENT LAND



NEW EARTH LAND



RURAL RESIDENTIAL DEVELOPMENT LAND

