

FOR SALE



ORCUTT LAND

DEVELOPMENT LAND

Bender
COMMERCIAL



**12TH STREET & ELLIS ROAD
SIOUX FALLS, SD**



28.9 ACRES +/-



\$ \$55,000/AC

- Parcel A - 11.4 acres
- Parcel B - 17.5 acres
- Development land located in expanding northwest Sioux Falls.
- Per the City of Sioux Falls, property is located in Tier 1 growth area.
- Located near the southwest corner of 12th Street and Ellis Road.
- Family Park, an urban fishing park, is just miles away.
- Less than 3 miles from I-29.

ANDI ANDERSON, SIOR

andi@benderco.com

605-782-1660

MICHAEL BENDER, CCIM, SIOR

michael@benderco.com

605-782-1662



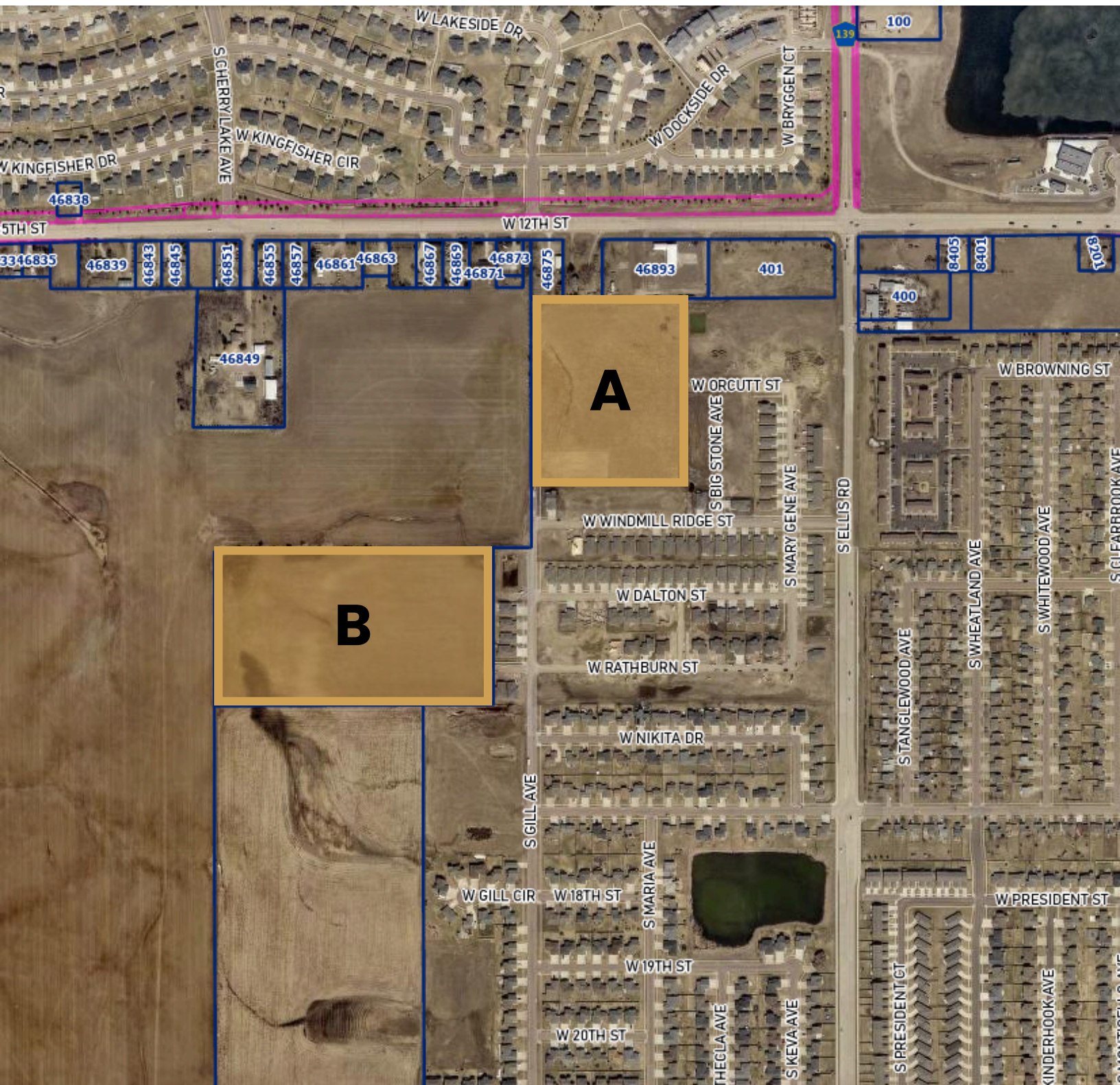
Bender Commercial Real Estate Services | 305 West 57th Street | Sioux Falls, SD 57108 | 605-336-7600 | benderco.com

© 2024 Bender Companies. Information herein deemed reliable, but not guaranteed.

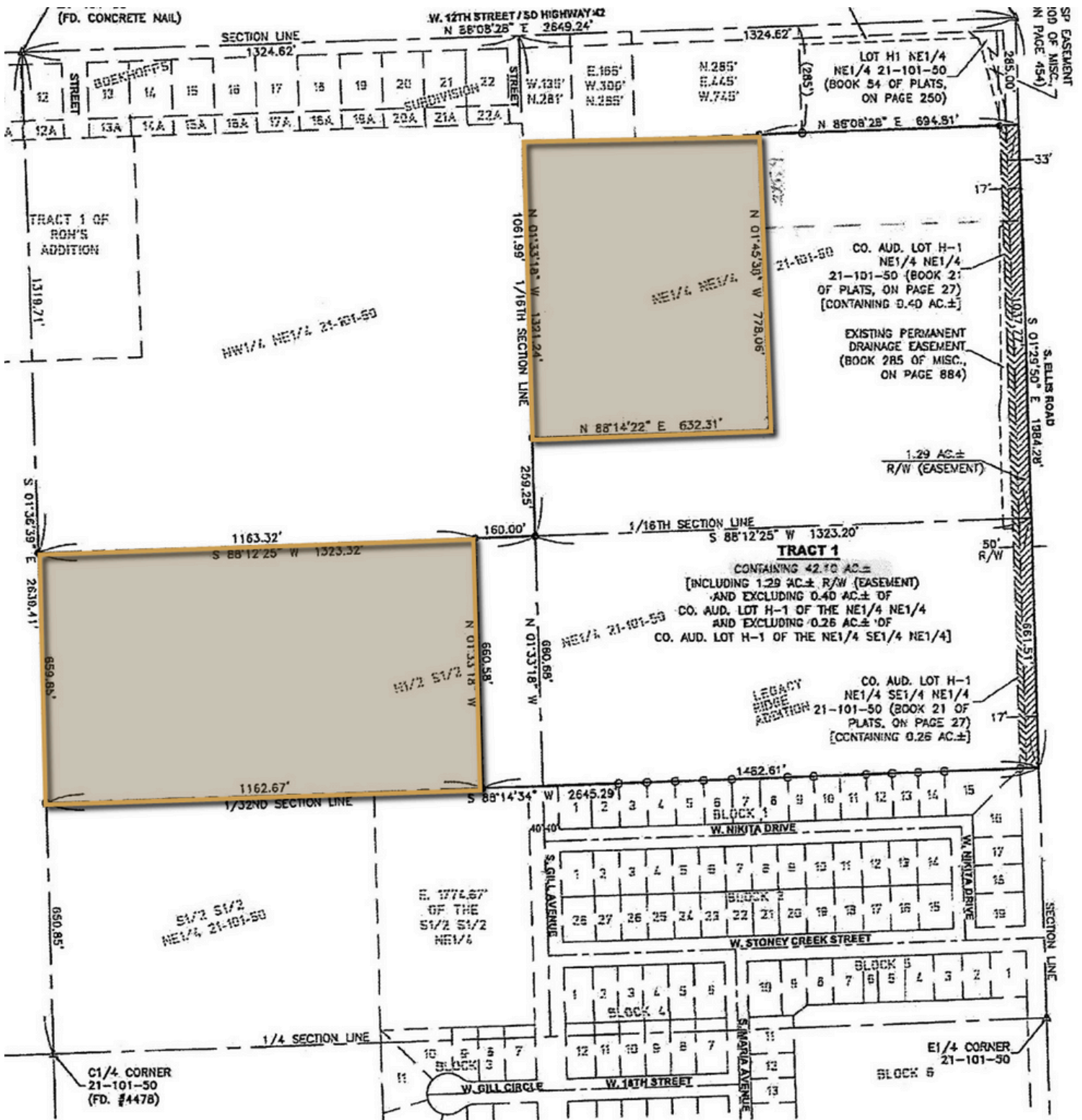
ORCUTT LAND



DEVELOPMENT LAND



DEVELOPMENT LAND



ORCUTT LAND



DEVELOPMENT LAND

