

FOR SALE

TEMPO ADDITION LAND

COMMERCIAL LAND

Bender
COMMERCIAL



469TH AVENUE & CODY TRAIL
TEA, SD



6.54 ACRES



\$5.25/SF

- Commercial land located just north of Tea.
- Frontage along Tea/Ellis Road.
- Zoned Commercial in Lincoln County.
- Highly visible Tea location with a daily traffic count of more than 3,700 vehicles.
- Easy access to I-29, Tea and Sioux Falls.
- A portion of the property is located in the floodplain - contact broker for details.

BRADYN NEISES, SIOR | bradyn@benderco.com | 605-782-1682



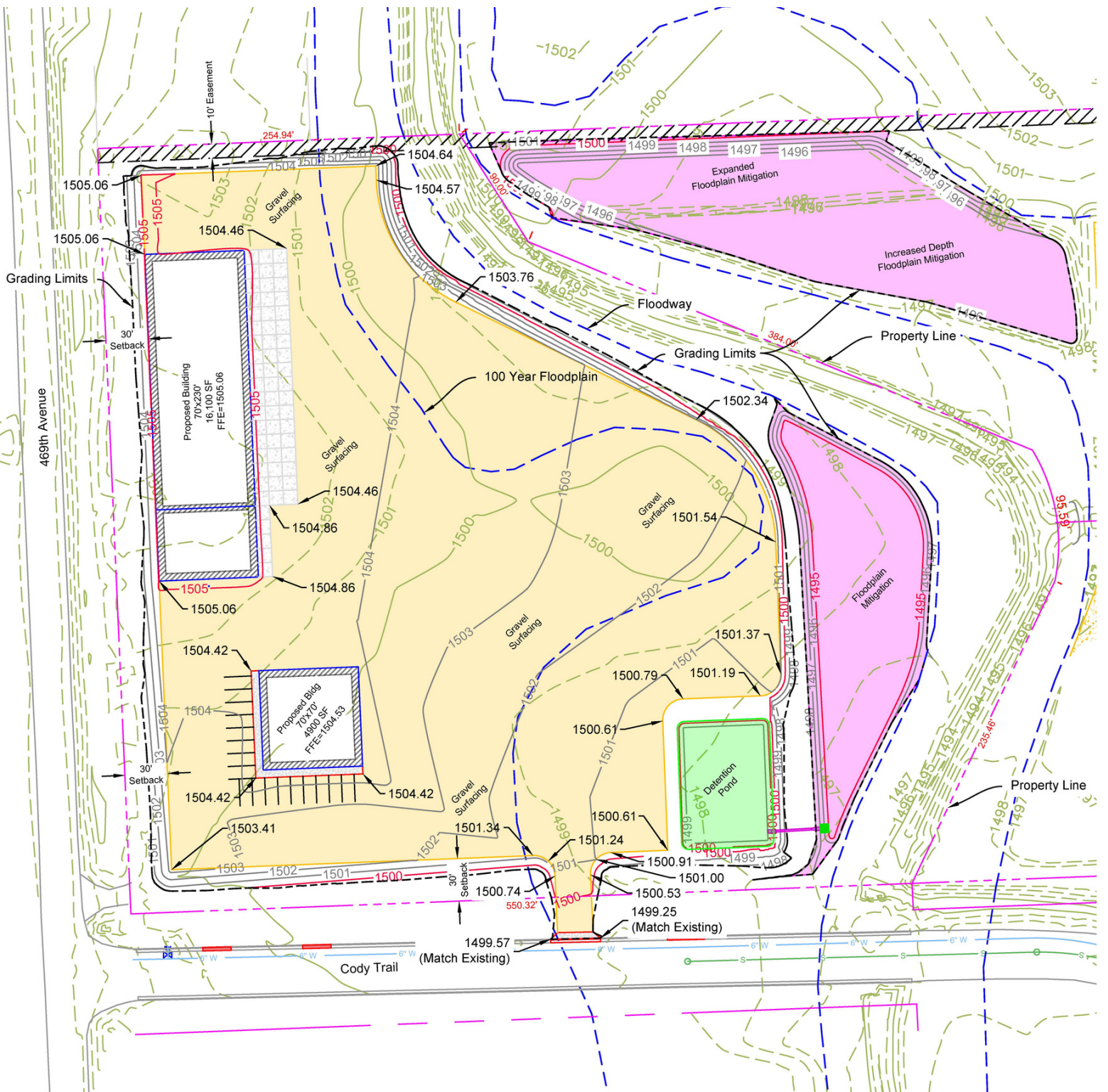
Bender Commercial Real Estate Services | 305 West 57th Street | Sioux Falls, SD 57108 | 605-336-7600 | benderco.com

© 2023 Bender Companies. Information herein deemed reliable, but not guaranteed.

TEMPO ADDITION LAND



CONCEPT PLAN



TEMPO ADDITION LAND



COMMERCIAL LAND

