



# WILLOW SPRINGS LAND

10TH STREET & SIX MILE ROAD DEVELOPMENT LAND

**Bender**  
COMMERCIAL



**8001 EAST 10TH STREET  
SIOUX FALLS, SD**



**35.08 ac**



**\$2,950,000**

- Residential/Multi-Family development land available in east Sioux Falls.
- Zoned RS Residential, RA-1 Residential & CN Conservation.
- Located on the corner of East 10th Street and Six Mile Road.
- Verizon cell tower income of roughly \$20,000/year - national buyers interested in cell tower parcel - contact broker for details.
- Site to be delivered via minor plat.
- 10th Street expanding to a 4-lane road, per city plans. Preliminary engineering plans available upon request.
- Located north of Willow Run Golf Course and near Dawley Farm Village and Veterans Parkway.

**BOBBIE TIBBETTS**

[bobbie@benderco.com](mailto:bobbie@benderco.com)

605-670-9455

**ROB KURTENBACH**

[rk@benderco.com](mailto:rk@benderco.com)

605-940-0559



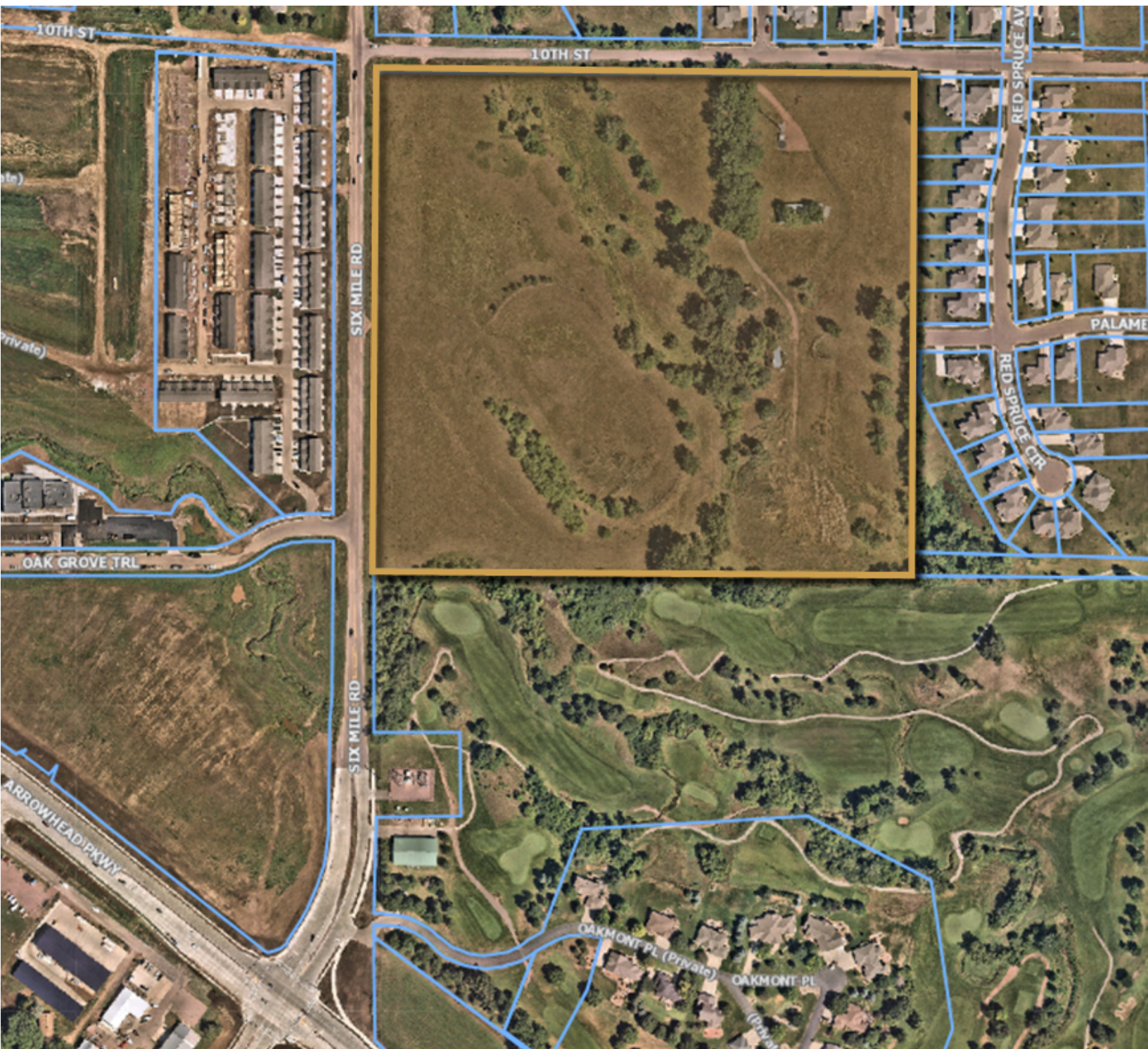
Bender Commercial Real Estate Services | 305 West 57th Street | Sioux Falls, SD 57108 | 605-336-7600 | [benderco.com](http://benderco.com)

© 2024 Bender Companies. Information herein deemed reliable, but not guaranteed.

# WILLOW SPRINGS LAND



## 10TH ST & SIX MILE RD DEVELOPMENT LAND



# WILLOW SPRINGS LAND



## PRELIMINARY CONCEPT LAYOUT



# WILLOW SPRINGS LAND



## 10TH ST & SIX MILE RD DEVELOPMENT LAND



# WILLOW SPRINGS LAND



## 10TH ST & SIX MILE RD DEVELOPMENT LAND

