

FOR LEASE



CORPORATE CENTRE IV

OFFICE SPACE – EAST OFFICE

Bender
COMMERCIAL



2300 E. 54TH STREET NORTH
SIOUX FALLS, SD



1,013 SF



\$14.50/SF NNN
EST NNNs: \$5.11/SF

- Office space located in Corporate Centre IV in northeast Sioux Falls.
- Space consists of reception area and two (2) private offices.
- Parking ratio of 1 space per 140 square feet.
- Monument and building signage available.
- Easy access Benson Road and I-229.
- Can be combined with adjacent suites - contact broker for details.

ALEX SOUNDY, SIOR | alex@benderco.com | 605-376-3700



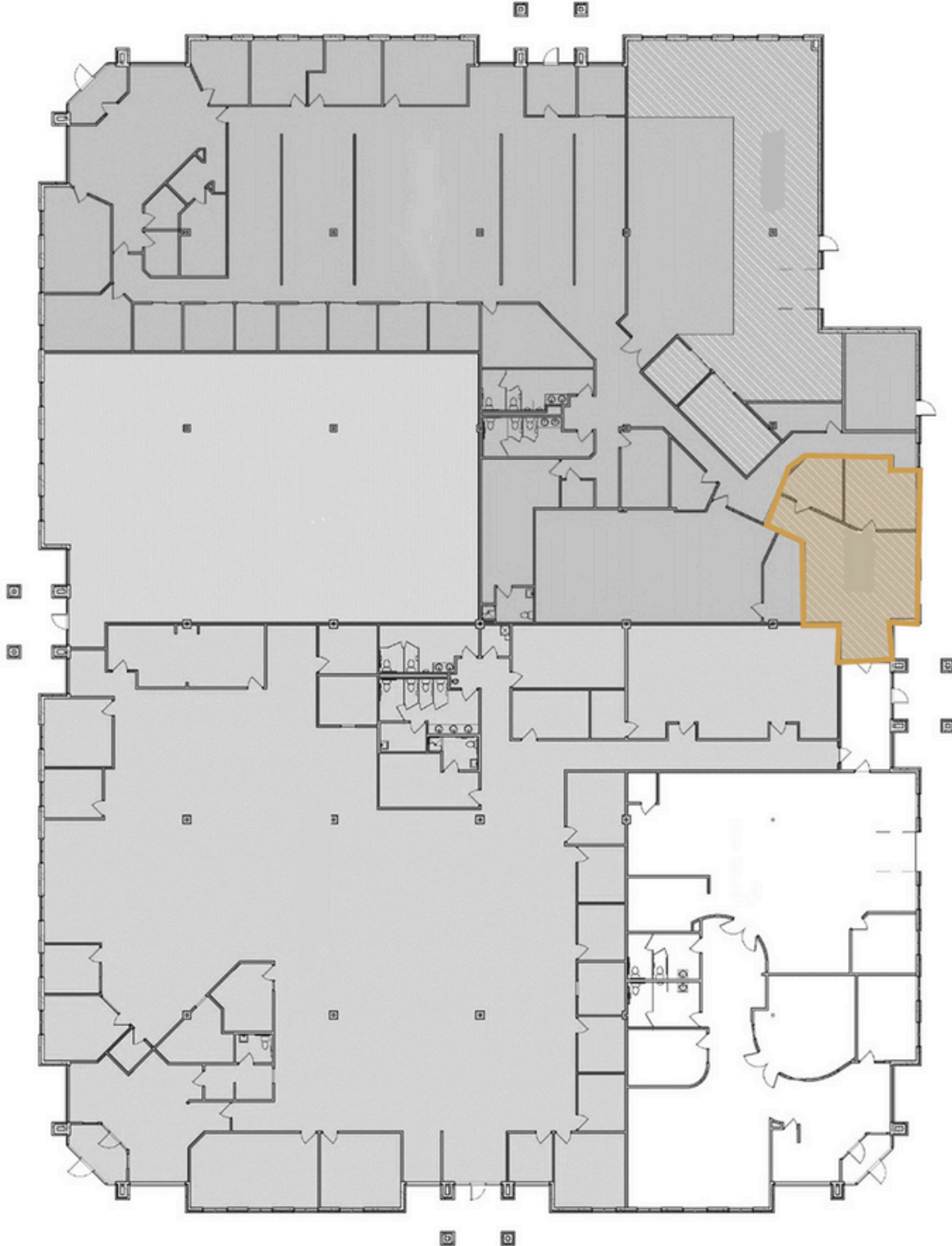
Bender Commercial Real Estate Services | 305 West 57th Street | Sioux Falls, SD 57108 | 605-336-7600 | benderco.com

© 2024 Bender Companies. Information herein deemed reliable, but not guaranteed.

CORPORATE CENTRE IV



OFFICE SPACE FOR LEASE



CORPORATE CENTRE IV



OFFICE SPACE FOR LEASE

