

**FOR SALE**



# GARRETSON INDUSTRIAL LOT

INDUSTRIAL LAND

**Bender**  
COMMERCIAL



**SOUTH DAKOTA HIGHWAY 11  
GARRETSON, SD**



**4.495 ACRES**



**\$ 2.00/SF**

- Industrial zoned lot located along SD Highway 11 in northern Garretson.
- Utilities available to the property, but buyer will be responsible for getting to potential building.
- Property will have access from Nordstrom Avenue.
- Access to 5th Street to be negotiated.
- Lot can be subdivided.
- Potential tax abatement savings - contact broker for more details.

**BRADYN NEISES, SIOR** | [bradyn@benderco.com](mailto:bradyn@benderco.com) | 605-782-1682



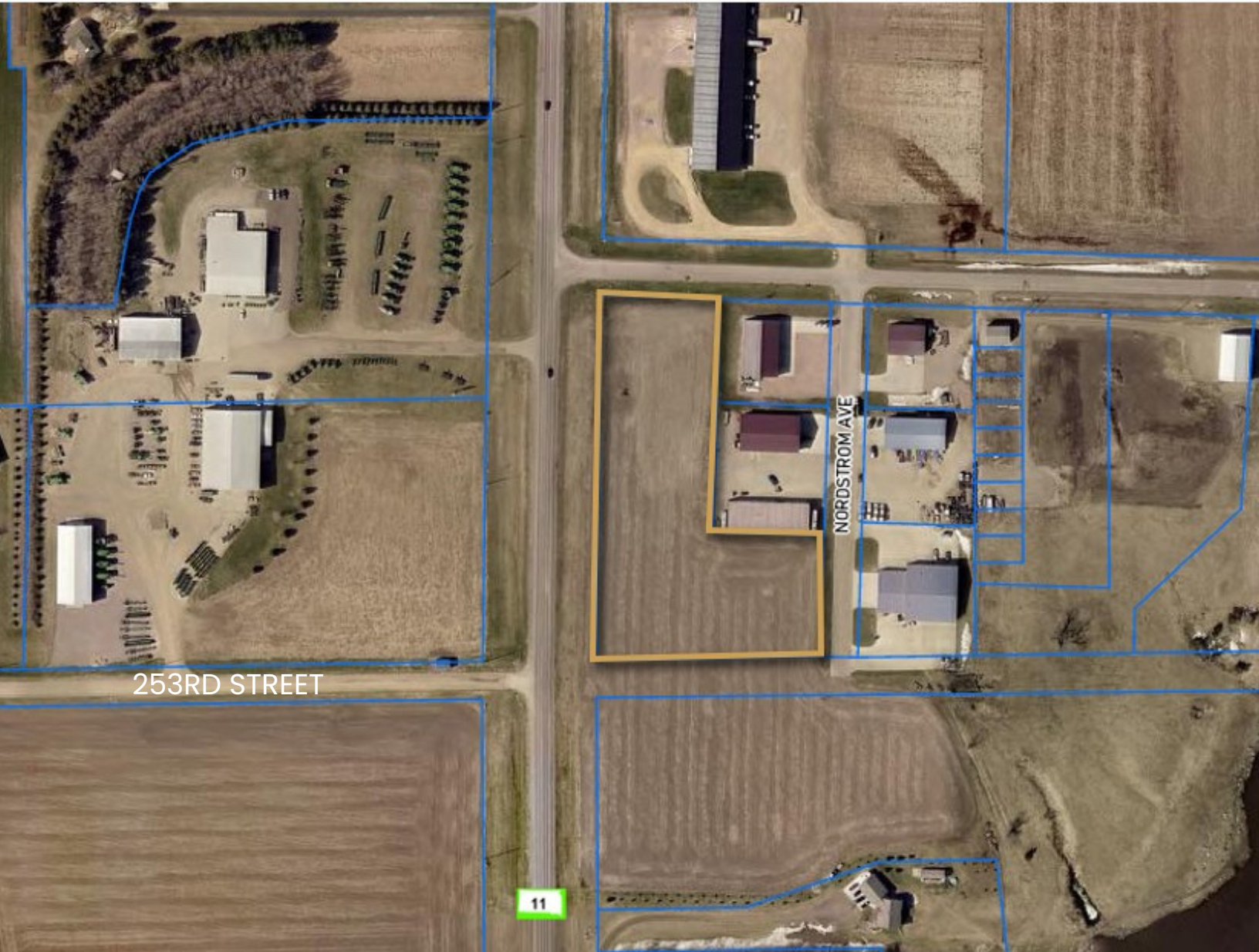
Bender Commercial Real Estate Services | 305 West 57th Street | Sioux Falls, SD 57108 | 605-336-7600 | [benderco.com](http://benderco.com)

© 2024 Bender Companies. Information herein deemed reliable, but not guaranteed.

# GARRETSON INDUSTRIAL LOT



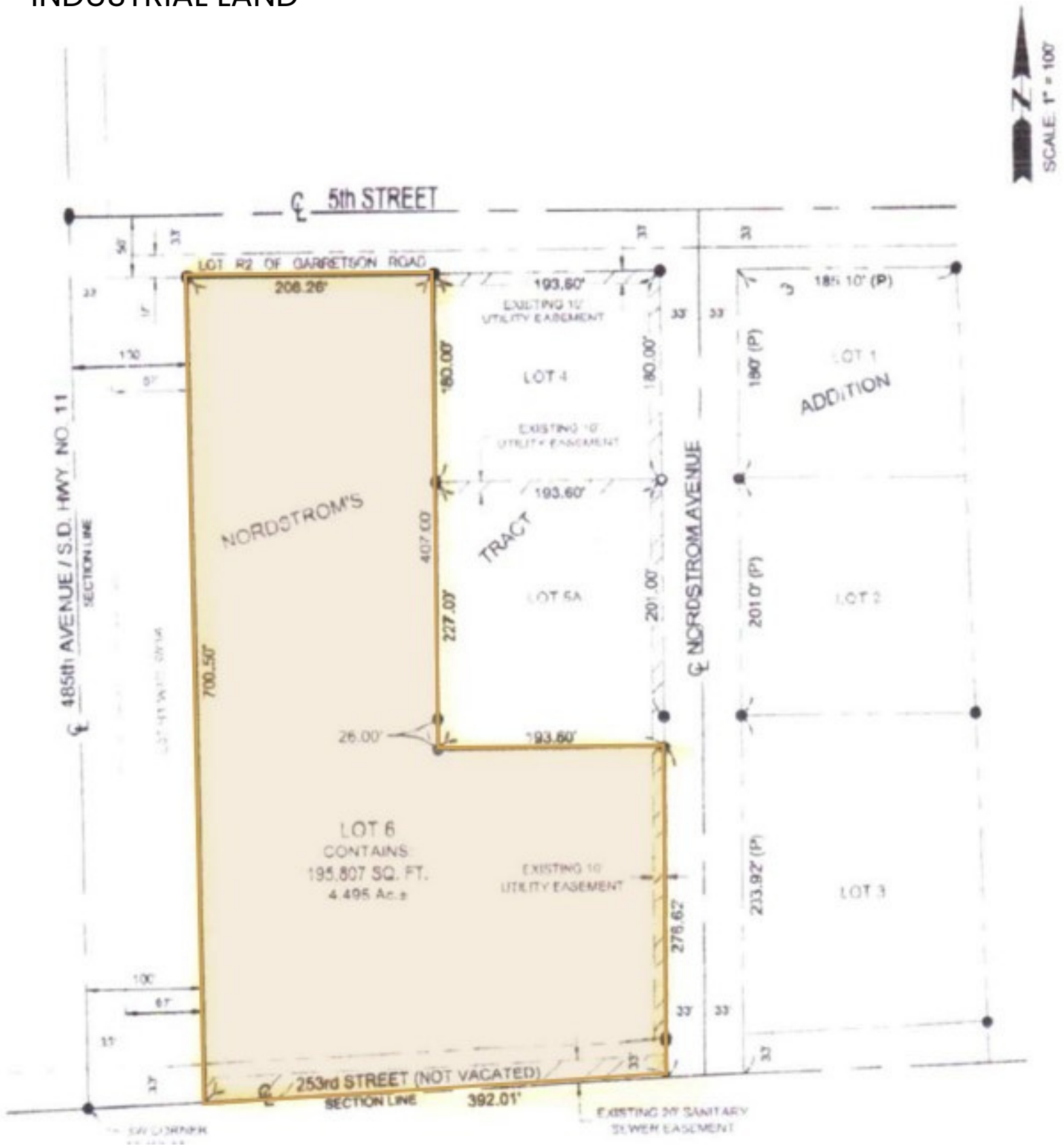
INDUSTRIAL LAND



# GARRETSON INDUSTRIAL LOT



## INDUSTRIAL LAND



# GARRETSON INDUSTRIAL LOT



INDUSTRIAL LAND

