

FOR SALE



LINDENWOOD

ASSISTED LIVING FACILITY

Bender
COMMERCIAL



**2409 LINDEN AVENUE
SLAYTON, MINNESOTA**



**13,525 SF
16 BEDS**



\$1,400,000

- 16-bed assisted living facility located in the heart of Slayton, Minnesota.
- 2.17 acres lot.
- Spacious common areas including living room and dining room.
- Full kitchen.
- Bedrooms have private bathrooms.
- Garage area for parking or storage.
- Parking ratio of 1:795 - 17 marked parking spaces.
- Contact broker for detailed financial information.

MICHAEL BENDER, CCIM, SIOR | michael@benderco.com | 605-782-1662



Bender Commercial Real Estate Services | 305 West 57th Street | Sioux Falls, SD 57108 | 605-336-7600 | benderco.com

© 2024 Bender Companies. Information herein deemed reliable, but not guaranteed.

LINDENWOOD



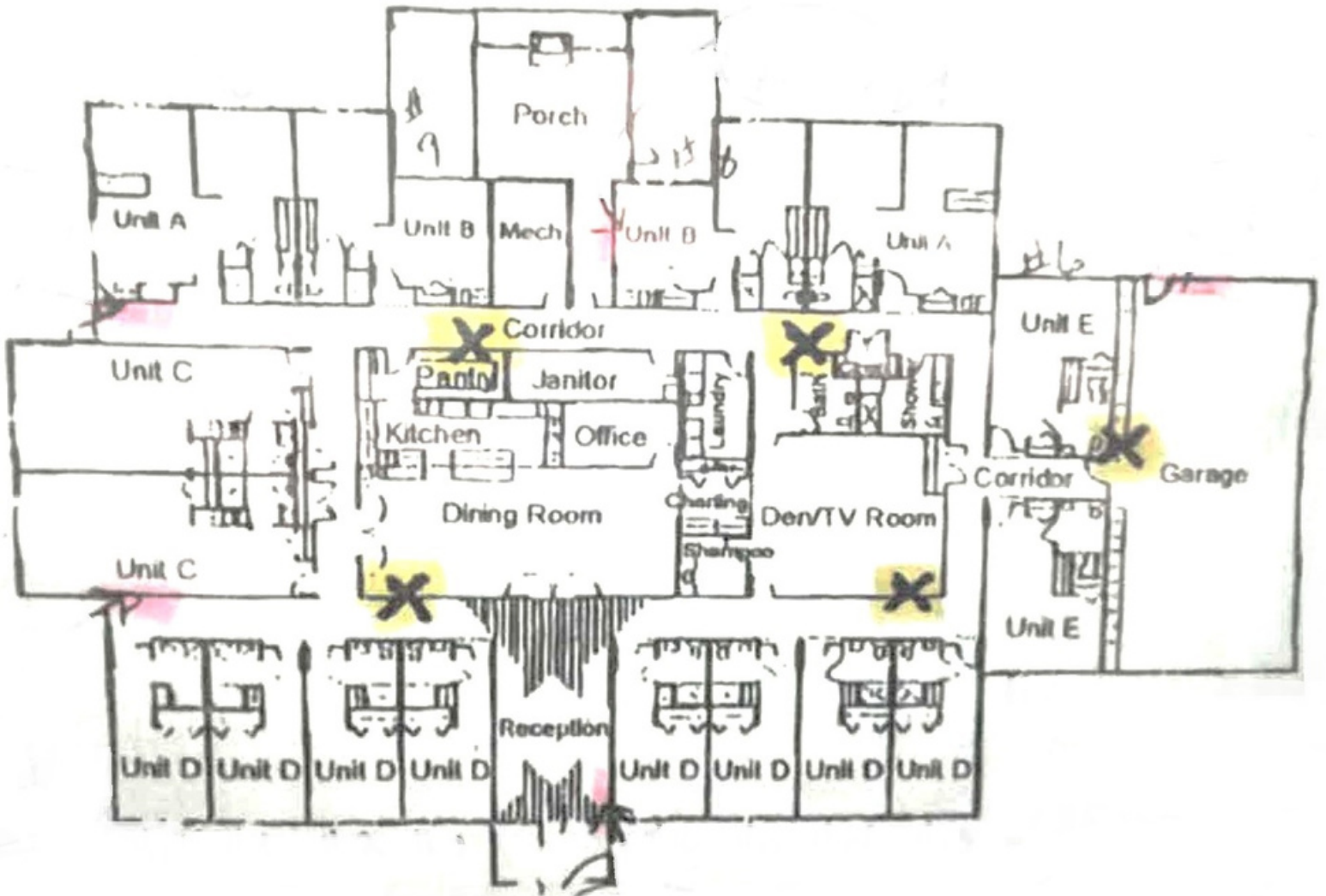
ASSISTED LIVING FACILITY



LINDENWOOD



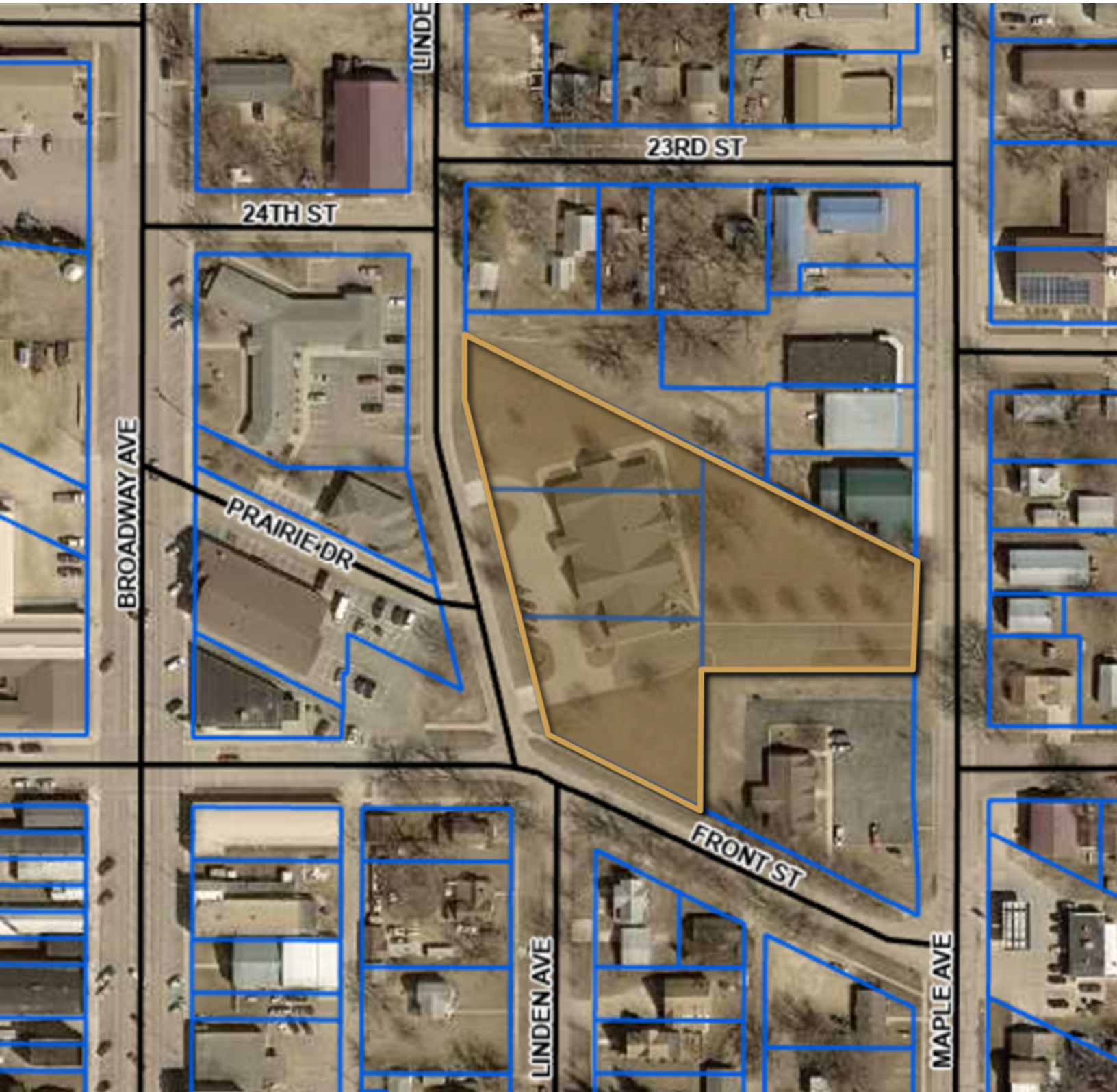
ASSISTED LIVING FACILITY



LINDENWOOD



ASSISTED LIVING FACILITY



LINDENWOOD



ASSISTED LIVING FACILITY

