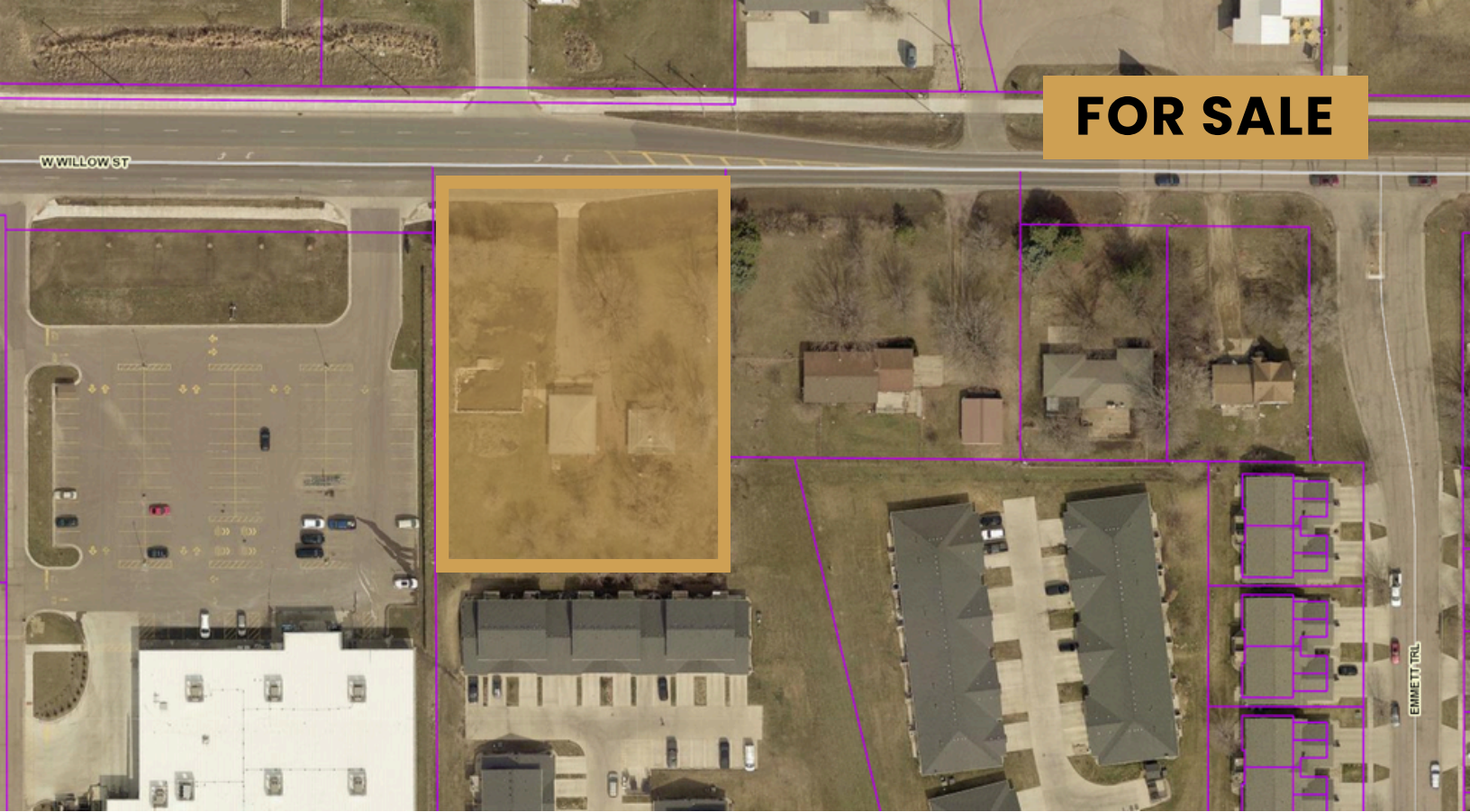


FOR SALE



WILLOW STREET LOT

CENTRAL HARRISBURG LAND

Bender
COMMERCIAL



**47515 WILLOW STREET
HARRISBURG, SD**



54,014 SF



\$15.00/SF

- Development lot available along Willow Street in central Harrisburg.
- Great location near the intersection of Willow Street and Cliff Avenue with a daily traffic count of 5,800 vehicles.
- Property needs to be annexed - City to support commercial zoning.
- City water.
- Can be purchased with east adjacent property (40,075 SF) - contact broker for details.
- Neighboring businesses include Dollar Fresh Market, Circle K, Ace Hardware, Fareway, Lewis Drug, Sanford Clinic, Dollar General, and Dairy Queen.
- Property to be sold as-is.

GERALD TEUNISSEN

gerald@benderco.com

605-366-1979

REGGIE KUIPERS, SIOR

reggie@benderco.com

605-496-2966



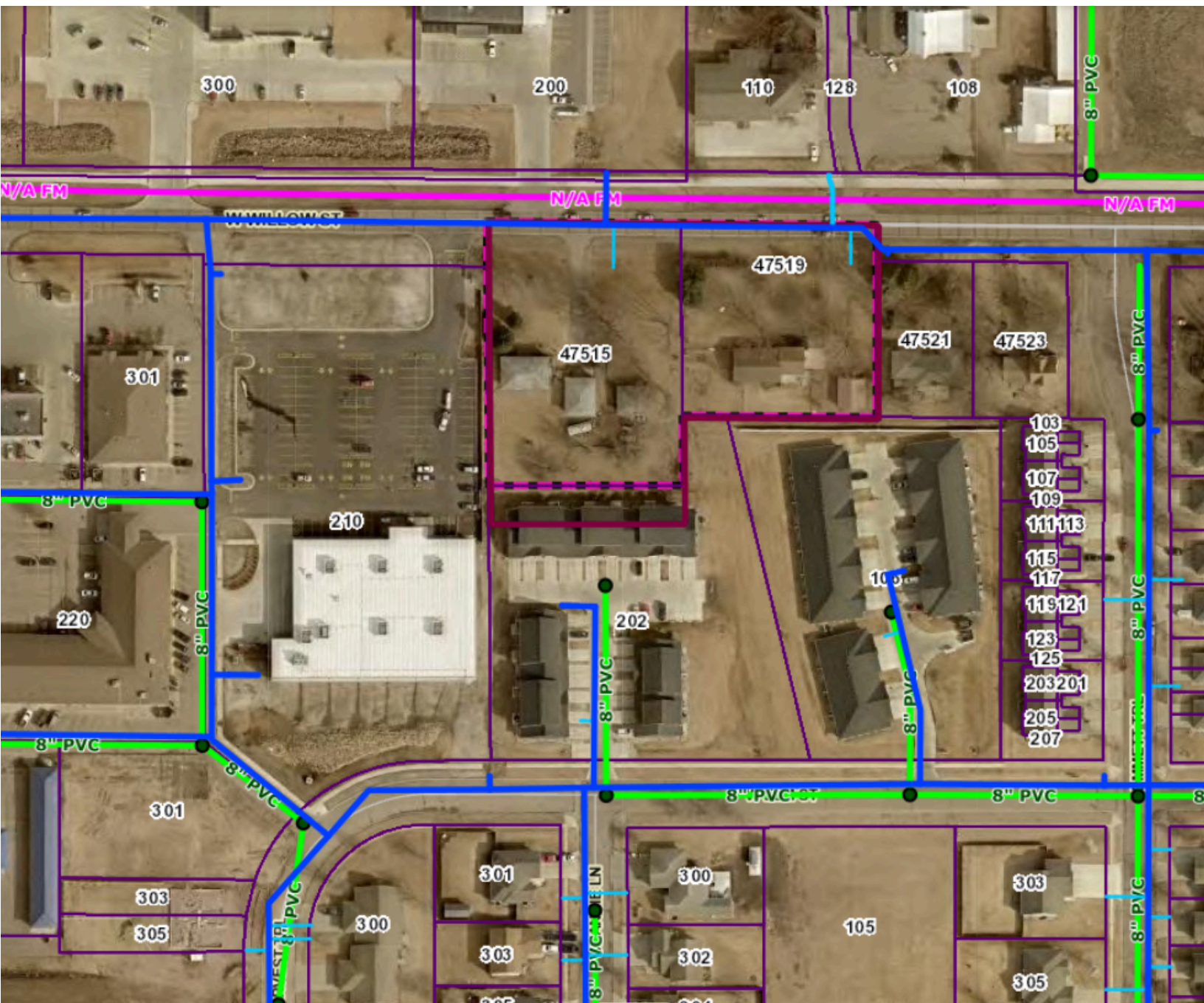
Bender Commercial Real Estate Services | 305 West 57th Street | Sioux Falls, SD 57108 | 605-336-7600 | benderco.com

© 2024 Bender Companies. Information herein deemed reliable, but not guaranteed.

WILLOW STREET LAND



HARRISBURG UTILITIES MAP



WILLOW STREET LAND



CENTRAL HARRISBURG LAND

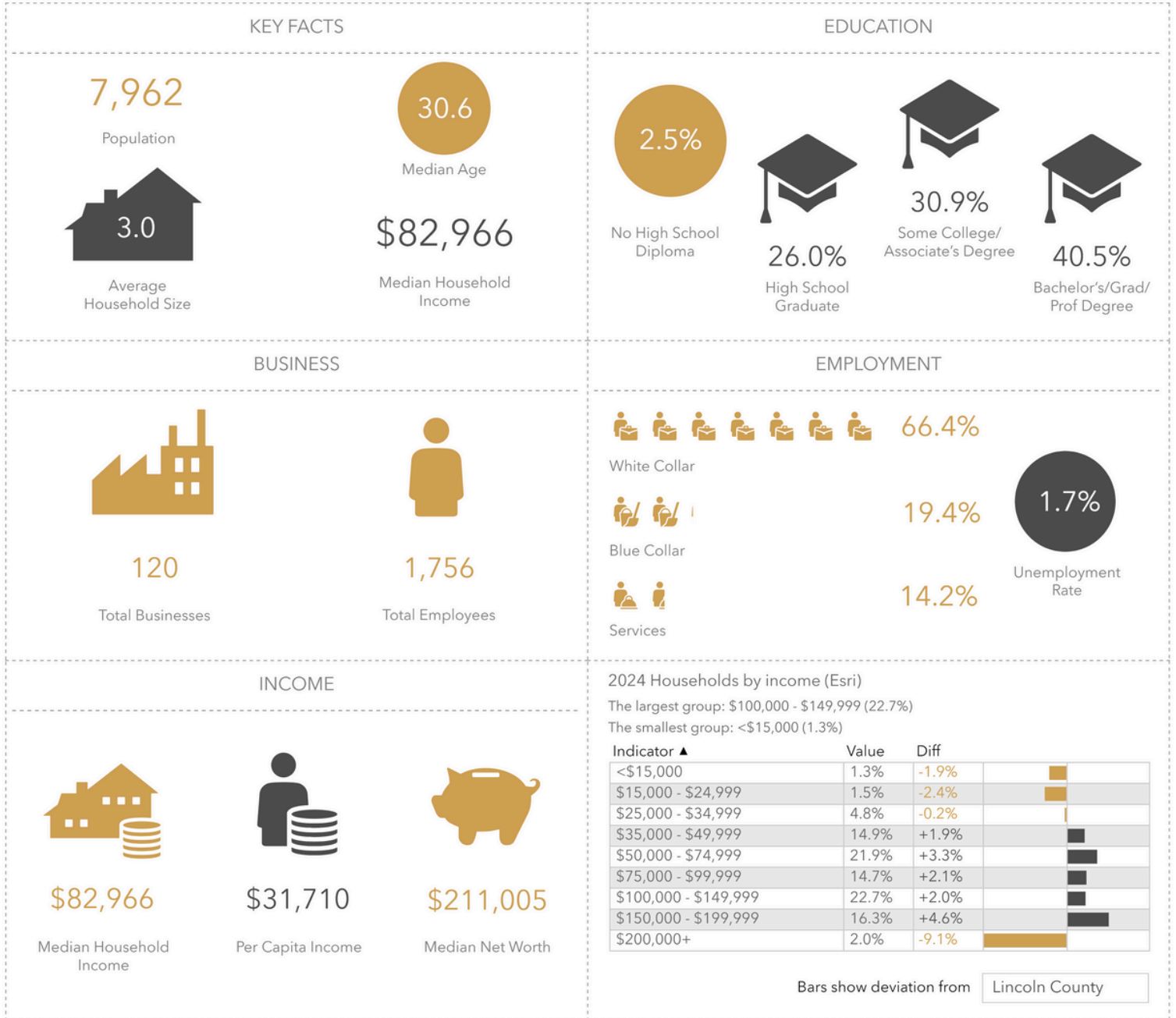


WILLOW STREET LAND



CENTRAL HARRISBURG LAND

Key Facts



Source: This infographic contains data provided by Esri (2024, 2029), Esri-Data Axle (2024). © 2024 Esri

WILLOW STREET LAND



CENTRAL HARRISBURG LAND

