

**FOR SALE**

W WILLOW ST

EMMETT TRL

# WILLOW STREET LOT

## HARRISBURG COMMERCIAL LAND

**Bender**  
COMMERCIAL



**47519 WILLOW STREET  
HARRISBURG, SD**



**40,075 SF**



**\$15.00/SF**

- Development lot available along Willow Street in central Harrisburg.
- Great location near the intersection of Willow Street and Cliff Avenue with a daily traffic count of 5,800 vehicles.
- Property needs to be annexed - City to support commercial zoning.
- City water.
- Can be purchased with west adjacent property (54,014 SF) - contact broker for details.
- Neighboring businesses include Dollar Fresh Market, Circle K, Ace Hardware, Fareway, Lewis Drug, Sanford Clinic, Dollar General, and Dairy Queen.
- Property to be sold as-is.

**GERALD TEUNISSEN**

gerald@benderco.com  
605-366-1979

**REGGIE KUIPERS, SIOR**

reggie@benderco.com  
605-496-2966



Bender Commercial Real Estate Services | 305 West 57th Street | Sioux Falls, SD 57108 | 605-336-7600 | benderco.com

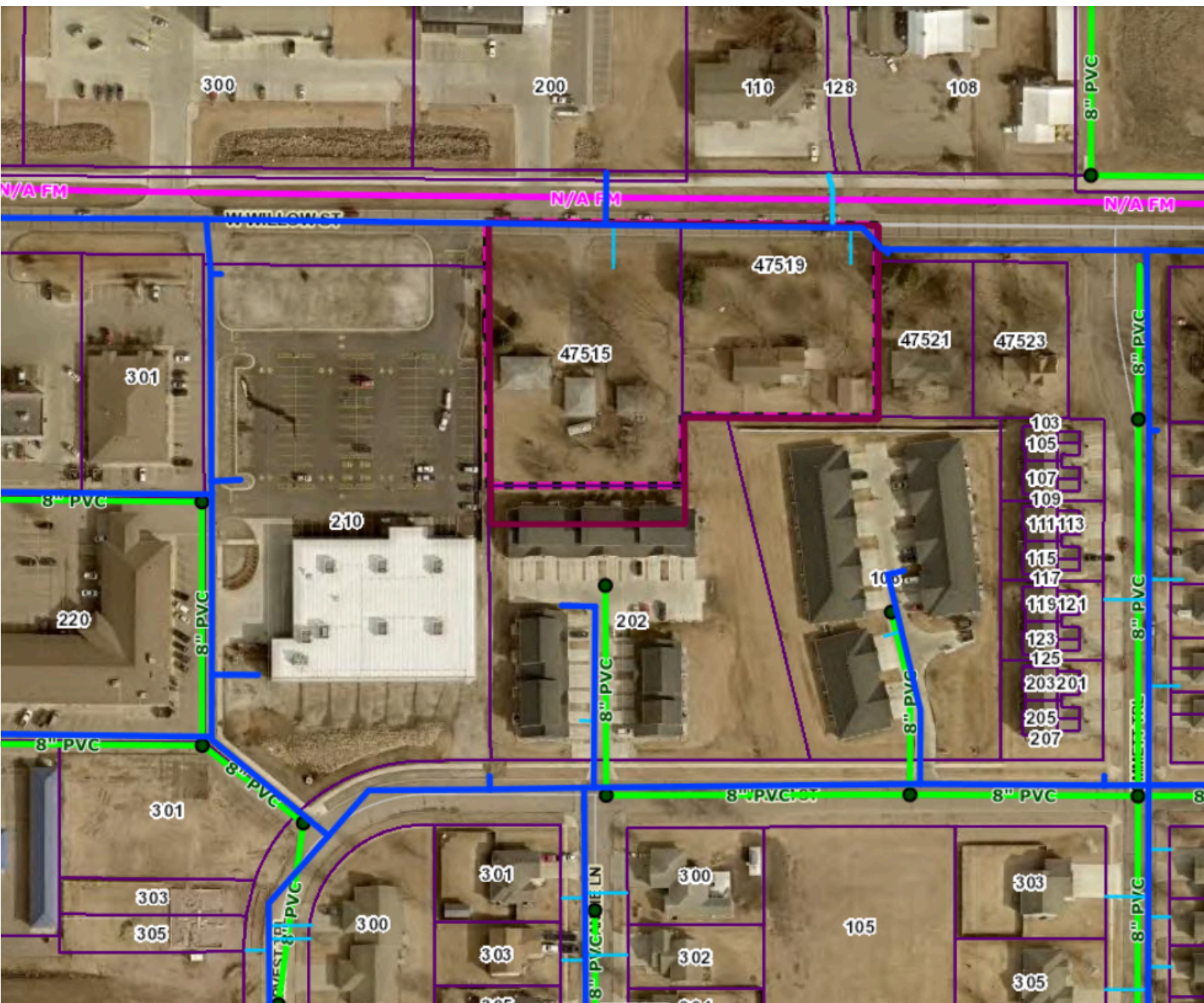
© 2024 Bender Companies. Information herein deemed reliable, but not guaranteed.



# WILLOW STREET LAND



## HARRISBURG UTILITIES MAP





# WILLOW STREET LAND



## HARRISBURG COMMERCIAL LAND

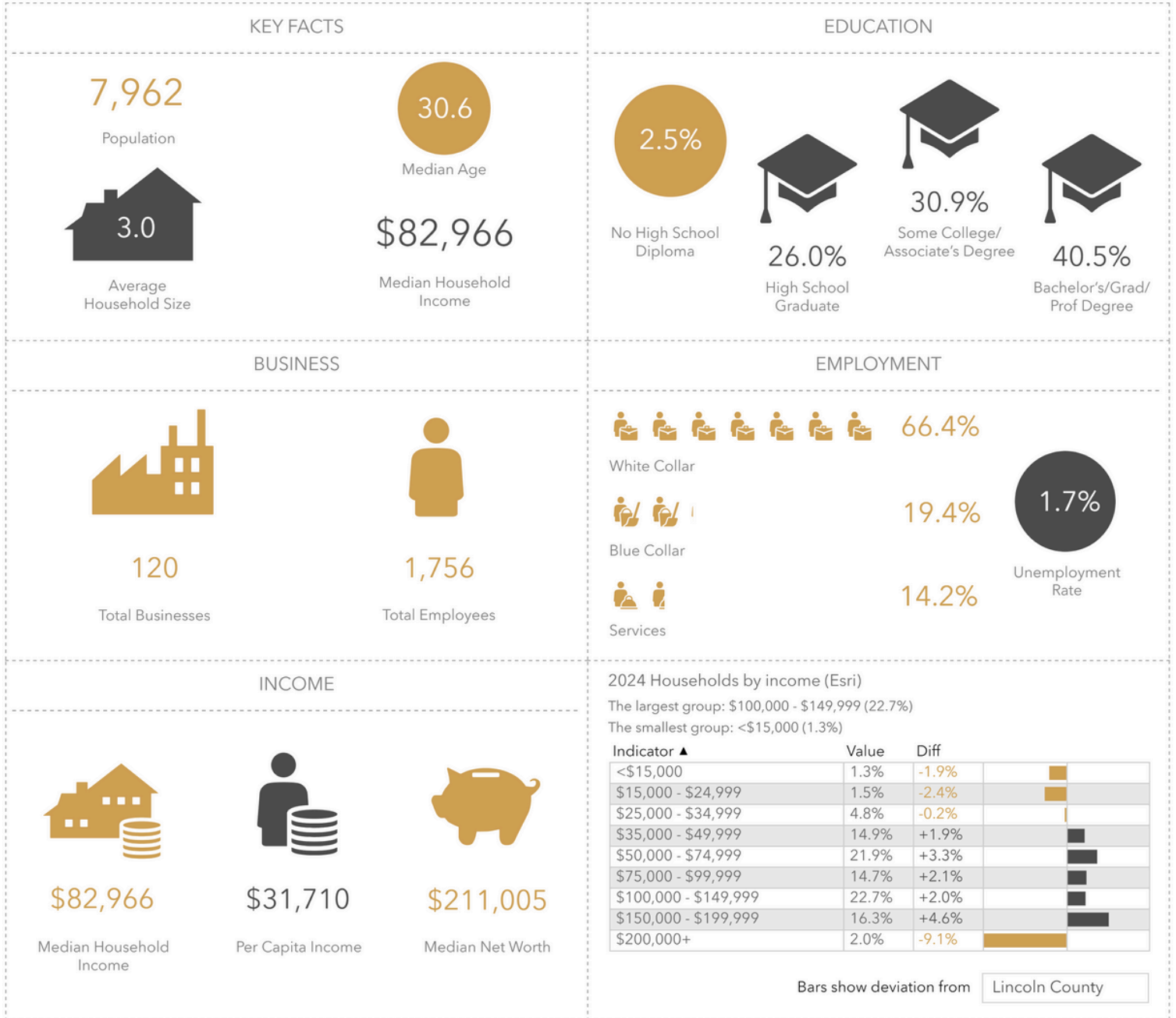


# WILLOW STREET LAND



## HARRISBURG COMMERCIAL LAND

### Key Facts



Source: This infographic contains data provided by Esri (2024, 2029), Esri-Data Axle (2024). © 2024 Esri



# WILLOW STREET LAND



## HARRISBURG COMMERCIAL LAND

