

FOR SALE



69TH STREET COMMERCIAL LAND

Bender
COMMERCIAL



**6101 SOUTH MAPLE ROCK TRAIL
SIOUX FALLS, SD**



2.37 ACRES



\$14.00/SF

- Commercial zoned (C-2) land located on the corner of 69th Street and Maple Rock Trail.
- Access from to-be-built private street.
- Great visibility along 69th Street.
- Neighboring businesses include Great Life, Southeastern Dental, Alpine Companies, Joshua Homes, Harrisburg Horizon Elementary and East Middle School, Sioux Falls Christian School and Wings Gymnastics.
- Easy access to future South Veterans Parkway (SD Highway 100).
- Covenant and restrictions apply - contact broker for details.

ALEX SOUNDY, SIOR
alex@benderco.com
605-376-3700

REGGIE KUIPERS, SIOR
reggie@benderco.com
605-496-2966



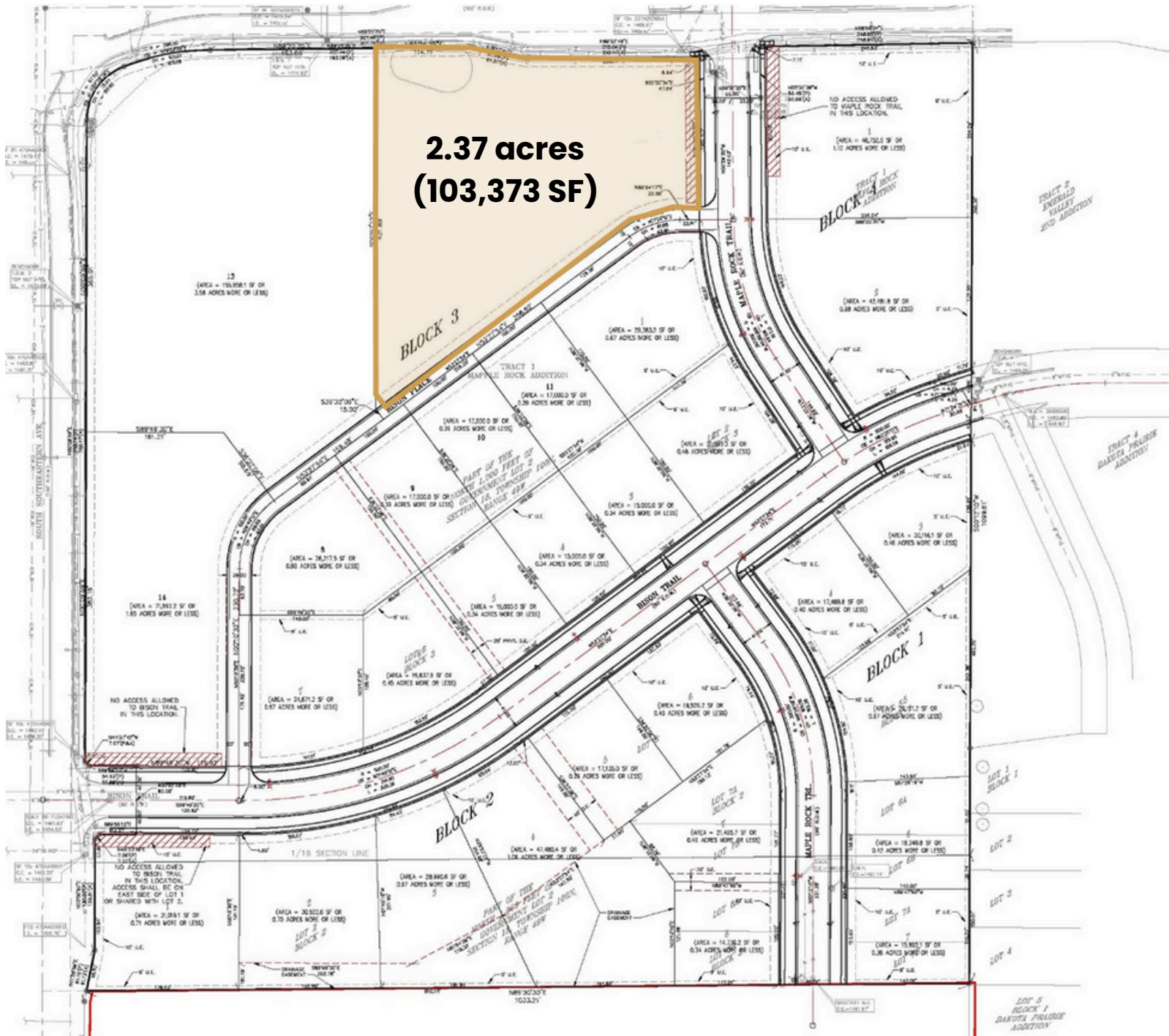
Bender Commercial Real Estate Services | 305 West 57th Street | Sioux Falls, SD 57108 | 605-336-7600 | benderco.com

© 2024 Bender Companies. Information herein deemed reliable, but not guaranteed.

MAPLE ROCK & 69TH ST LAND



COMMERCIAL LAND FOR SALE



MAPLE ROCK & 69TH ST LAND



COMMERCIAL LAND FOR SALE



Bender Commercial Real Estate Services | 305 West 57th Street | Sioux Falls, SD 57108 | 605-336-7600 | benderco.com

2024 Bender Companies. Information herein deemed reliable, but not guaranteed.

MAPLE ROCK & 69TH ST LAND



COMMERCIAL LAND FOR SALE

