

FOR LEASE



DAKOTA DENTAL BUILDING

OFFICE SPACE

Bender
COMMERCIAL



**7600 SOUTH BROOKSIDE CIRCLE
SIOUX FALLS, SD**



**7,920 USF
8,594 RSF**



\$24.50/SF NNN

- Upper level office space located in the newly constructed Dakota Dental Building in south Sioux Falls
- Flexible floorplan to accommodate tenant's needs.
- Parking ratio of 1 space per 211 SF. Monument signage available.
- Geothermal HVAC system resulting in 20% lower utility costs.
- \$25.00/SF TI Allowance for office or clinic space.
- Easy access to 85th Street and Minnesota Avenue.
- Great visibility along South Veterans Parkway (SD Highway 100).
- Neighboring businesses include Sioux Falls Urgent Care, Soo Sports, Dollar Tree, Walmart, Burger King, McDonalds, Schulte Subaru and Aldi.

ROB FAGNAN, SIOR | rob@benderco.com | 605-521-5444



Bender Commercial Real Estate Services | 305 West 57th Street | Sioux Falls, SD 57108 | 605-336-7600 | benderco.com

© 2024 Bender Companies. Information herein deemed reliable, but not guaranteed.

DAKOTA DENTAL BUILDING



OFFICE SPACE FOR LEASE



Bender Commercial Real Estate Services | 305 West 57th Street | Sioux Falls, SD 57108 | 605-336-7600 | benderco.com

2024 Bender Companies. Information herein deemed reliable, but not guaranteed.

DAKOTA DENTAL BUILDING



OFFICE SPACE FOR LEASE

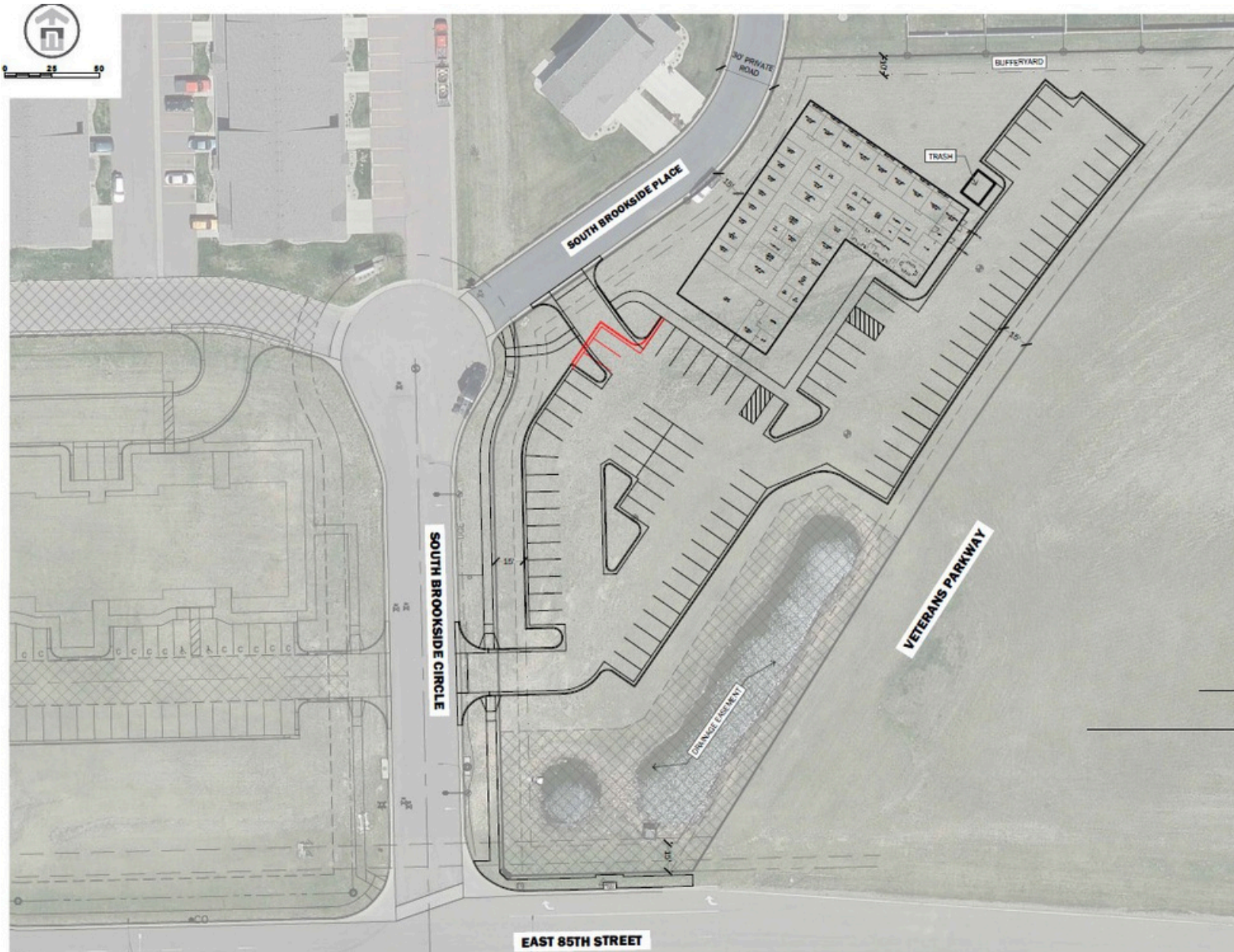


② SECOND FLOOR PLAN
1/8" = 1'-0"

DAKOTA DENTAL BUILDING



OFFICE SPACE FOR LEASE



DAKOTA DENTAL BUILDING



OFFICE SPACE FOR LEASE

