

FOR SALE

GET IT GO

**SOUTHEAST
TECH**

NORTHWEST QSR & DRIVE-THRU PAD SITES

Bender
COMMERCIAL



**4200 WEST VOYAGE STREET
SIOUX FALLS, SD**



3 ONE-ACRE LOTS



\$15.00/SF

- Commercial zoned land located on the southwest corner of Maple Street and Career Avenue in the Boyce Park Addition.
- QSR/Strip Mall/Drive-thru pad sites.
- Access via to-be-constructed Voyage Street - 2025 street construction.
- Can be subdivided into approximately three (3) 1.0 acre retail sites.
- Easy access to I-29.
- Located near Southeast Technical Institute and Jefferson High School.
- Subject to deed restriction for C-Store and car wash.

REGGIE KUIPERS, SIOR | reggie@benderco.com | 605-496-2966



Bender Commercial Real Estate Services | 305 West 57th Street | Sioux Falls, SD 57108 | 605-336-7600 | benderco.com

© 2024 Bender Companies. Information herein deemed reliable, but not guaranteed.

NW QSR/DRIVE-THRU PAD SITES

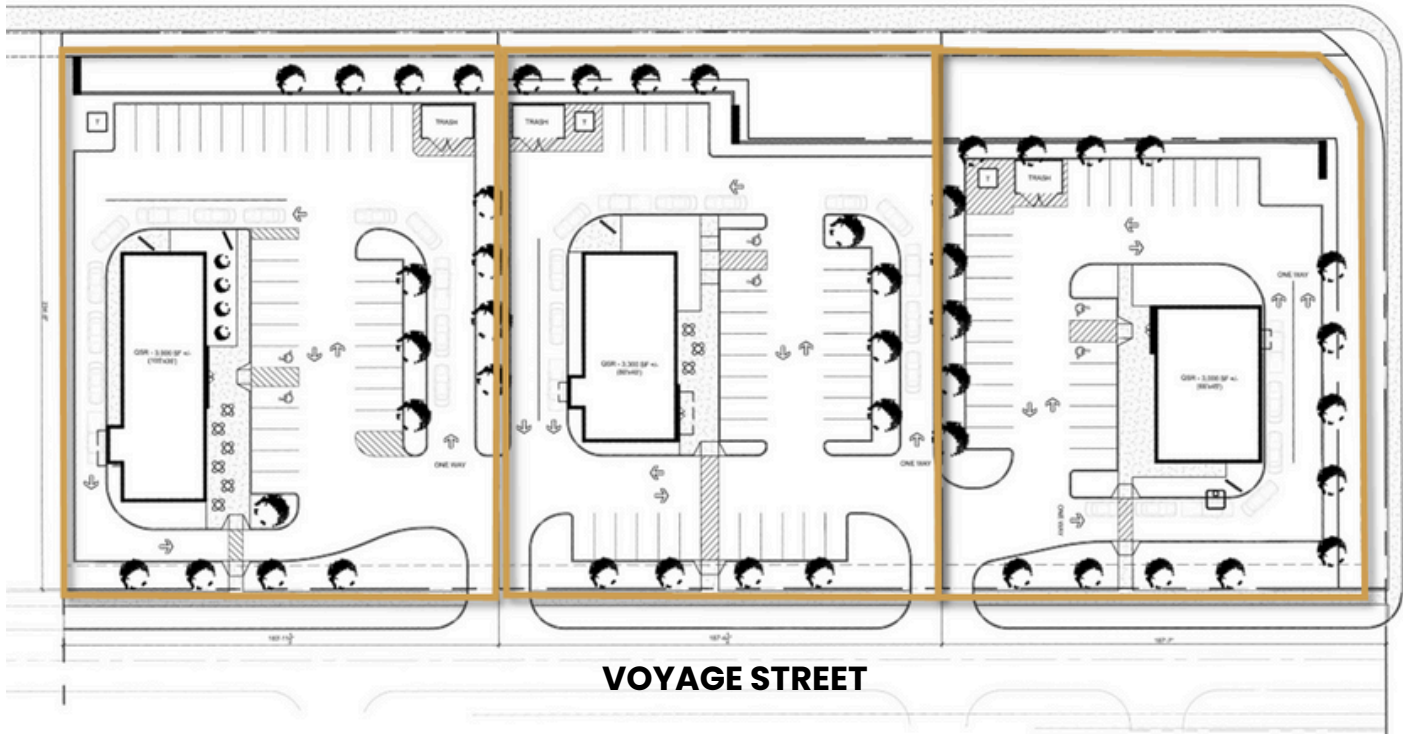


CONCEPT LAYOUT

43,170 SF

43,970 SF

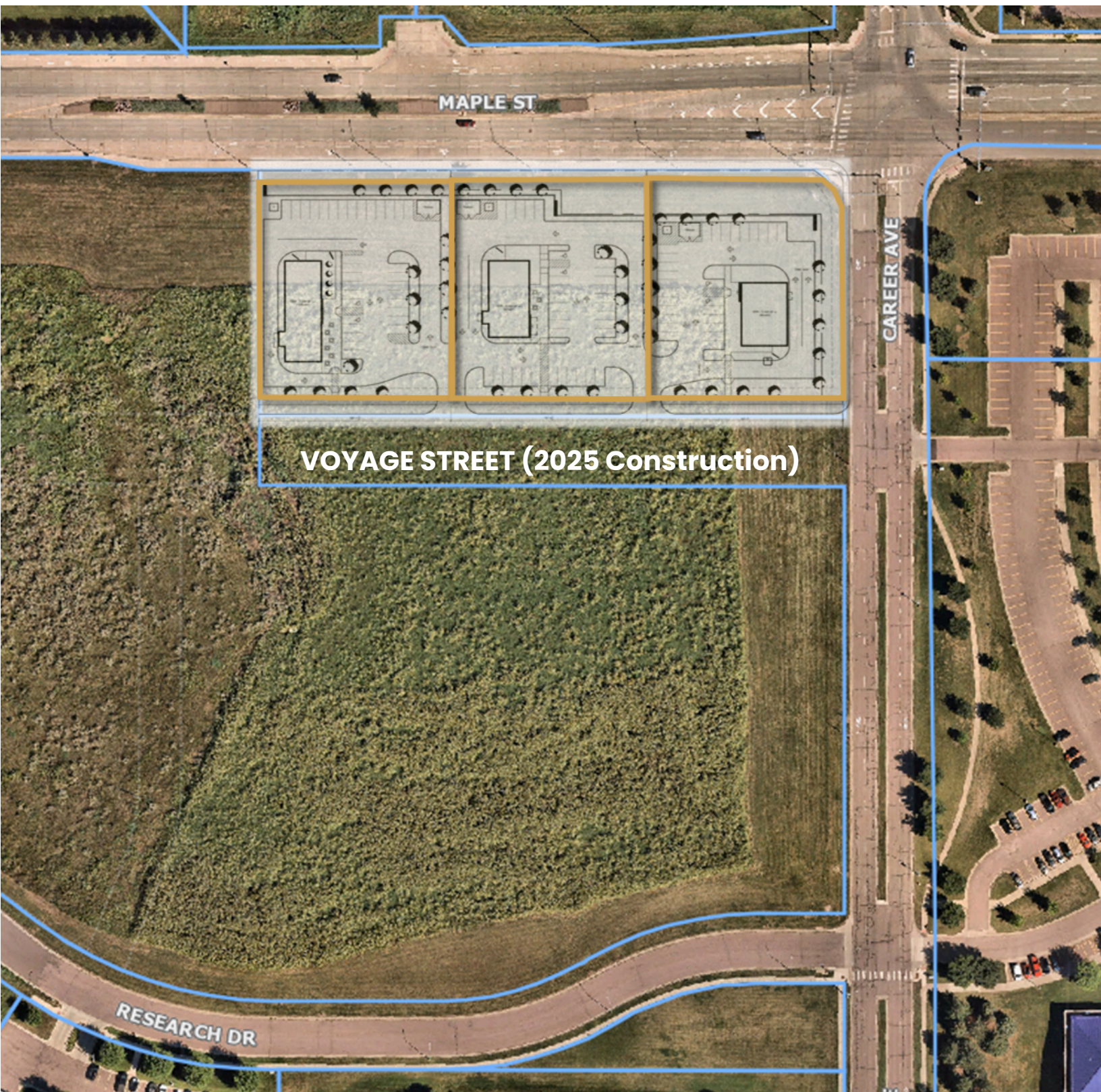
43,621 SF



NW QSR/DRIVE-THRU PAD SITES



CONCEPT LAYOUT - 2025 STREET CONSTRUCTION



NW QSR/DRIVE-THRU PAD SITES



COMMERCIAL LAND FOR SALE

