

FOR SALE



RAPID CITY DEVELOPMENT LAND

Bender
COMMERCIAL



**SAMMIS TRAIL & HEALING WAY
RAPID CITY, SD**



38.18 AC



\$ 2.00/SF

- Residential development land located in south Rapid City near Highway 16.
- Zoned MDR - Medium Density Residential District - approved uses are single-family, townhomes and multi-family.
- Located within Rapid City city limits. Utilities to site.
- Neighboring businesses include US Forest Services-Mystic Ranger Station, Fox Den Store-It, Black Hills Energy and Black Hills Orthopedic & Spine Center.

ALEX SOUNDY, SIOR
alex@benderco.com
605-376-3700

ROB KURTENBACH
rk@benderco.com
605-940-0559



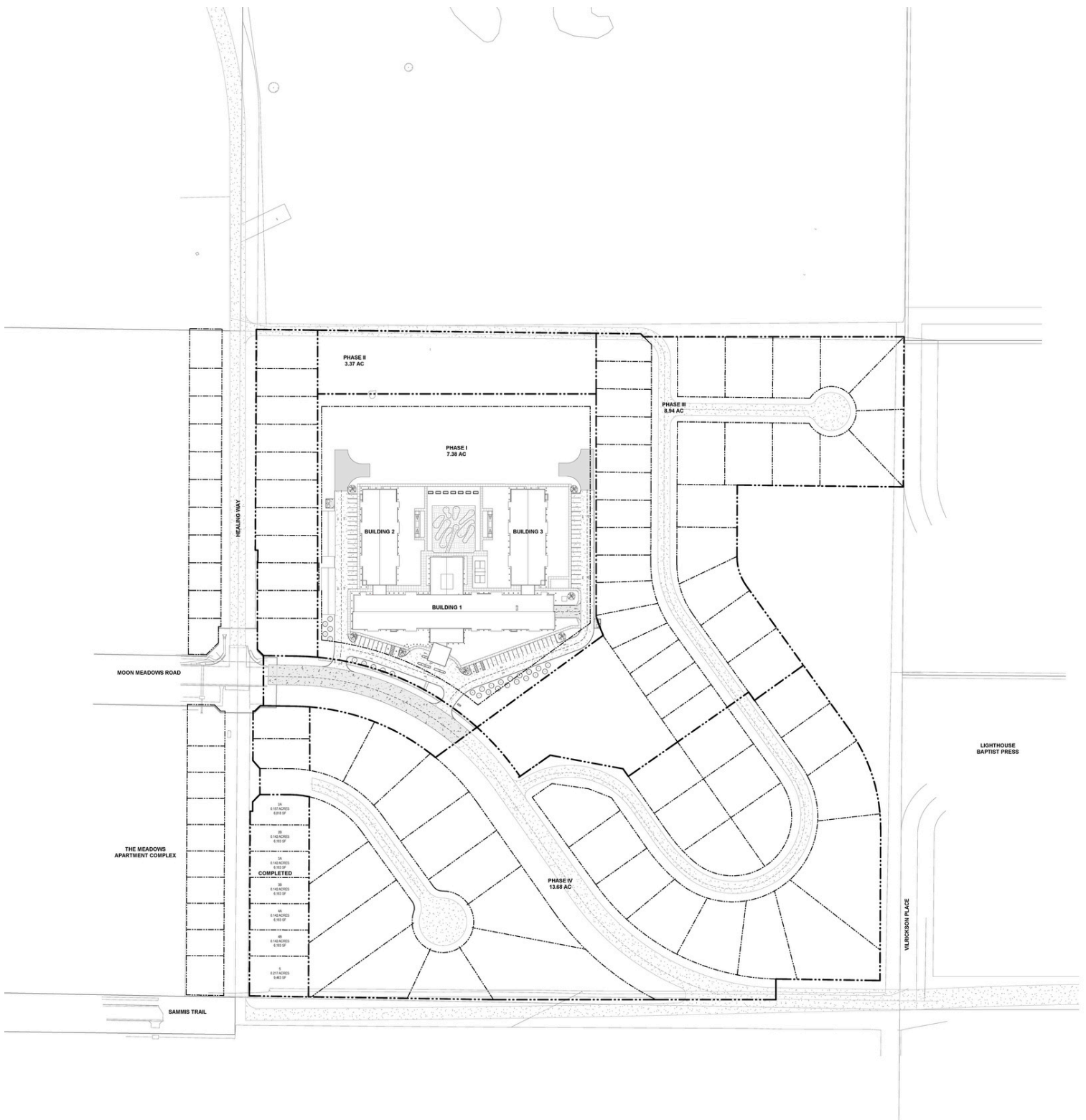
Bender Commercial Real Estate Services | 305 West 57th Street | Sioux Falls, SD 57108 | 605-336-7600 | benderco.com

© 2024 Bender Companies. Information herein deemed reliable, but not guaranteed.

RAPID CITY DEVELOPMENT LAND



PRELIMINARY SITE PLAN



RAPID CITY DEVELOPMENT LAND



RESIDENTIAL DEVELOPMENT



RAPID CITY DEVELOPMENT LAND



RESIDENTIAL DEVELOPMENT

