

FOR SALE



FLATIRON CROSSING

Bender
COMMERCIAL



**CAULFIELD STREET
HARRISBURG, SD**



**2.95 TO 14.84 AC
SUBDIVIDABLE**



\$5.50 - \$8.00/SF

- Industrial and commercial zoned lots located in the Flatiron Crossing Addition in north Harrisburg.
- Owner intends to rezone east lot to General Business/Commercial.
- Utilities stubbed to the property line.
- Caulfield Street and Flatiron Avenue are complete.
- Neighboring businesses include Black Dog Storage, Sioux Valley Coop, Jimmy John's, Great Life, Shoeneman's, Big J's Road House and Air Madness.
- Easy access to Cliff Avenue.
- Contact broker if interested in subdividing.

BRADYN NEISES, SIOR | bradyn@benderco.com | 605-579-0189



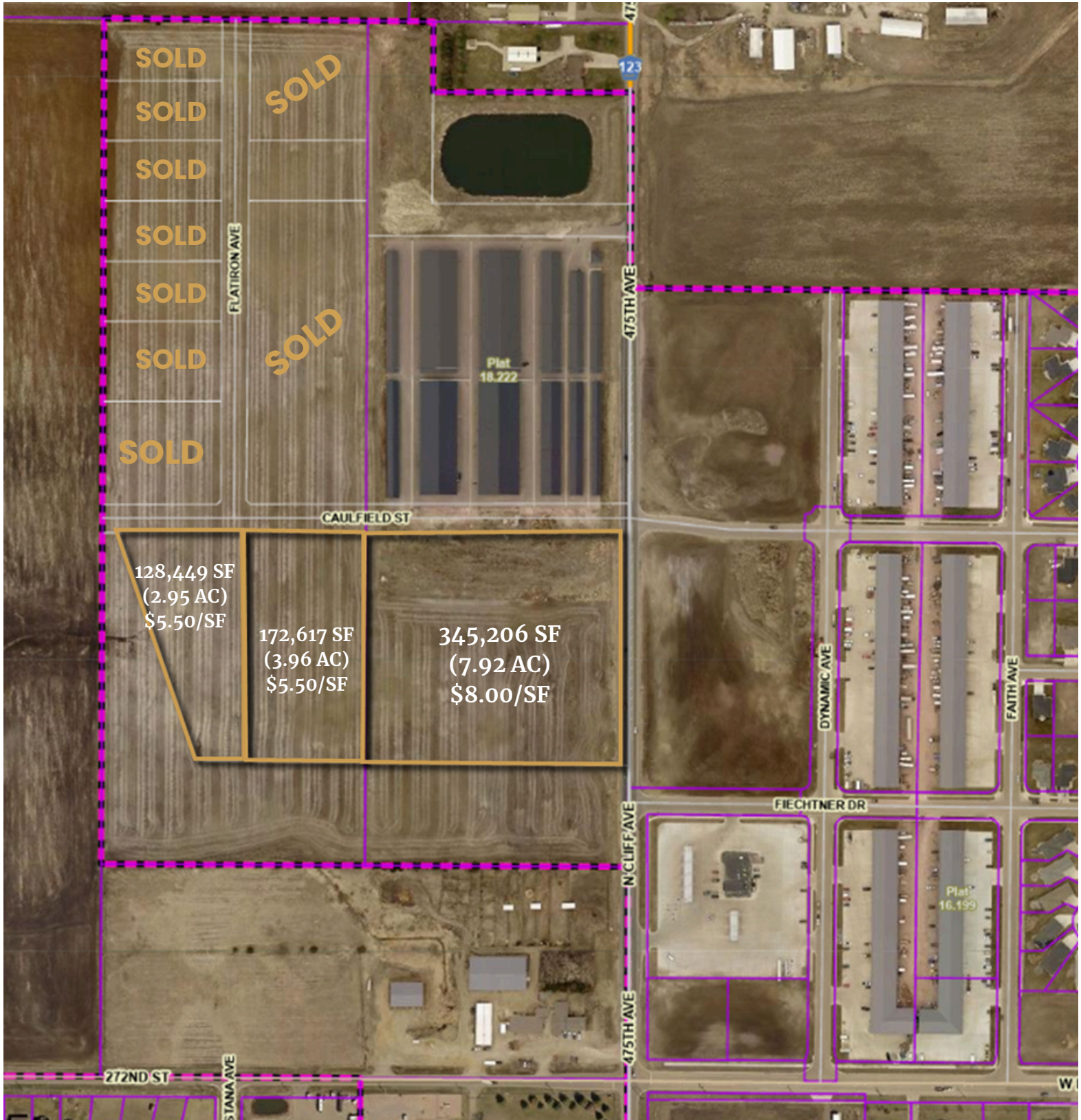
Bender Commercial Real Estate Services | 305 West 57th Street | Sioux Falls, SD 57108 | 605-336-7600 | benderco.com

© 2025 Bender Companies. Information herein deemed reliable, but not guaranteed.

FLATIRON CROSSING LAND



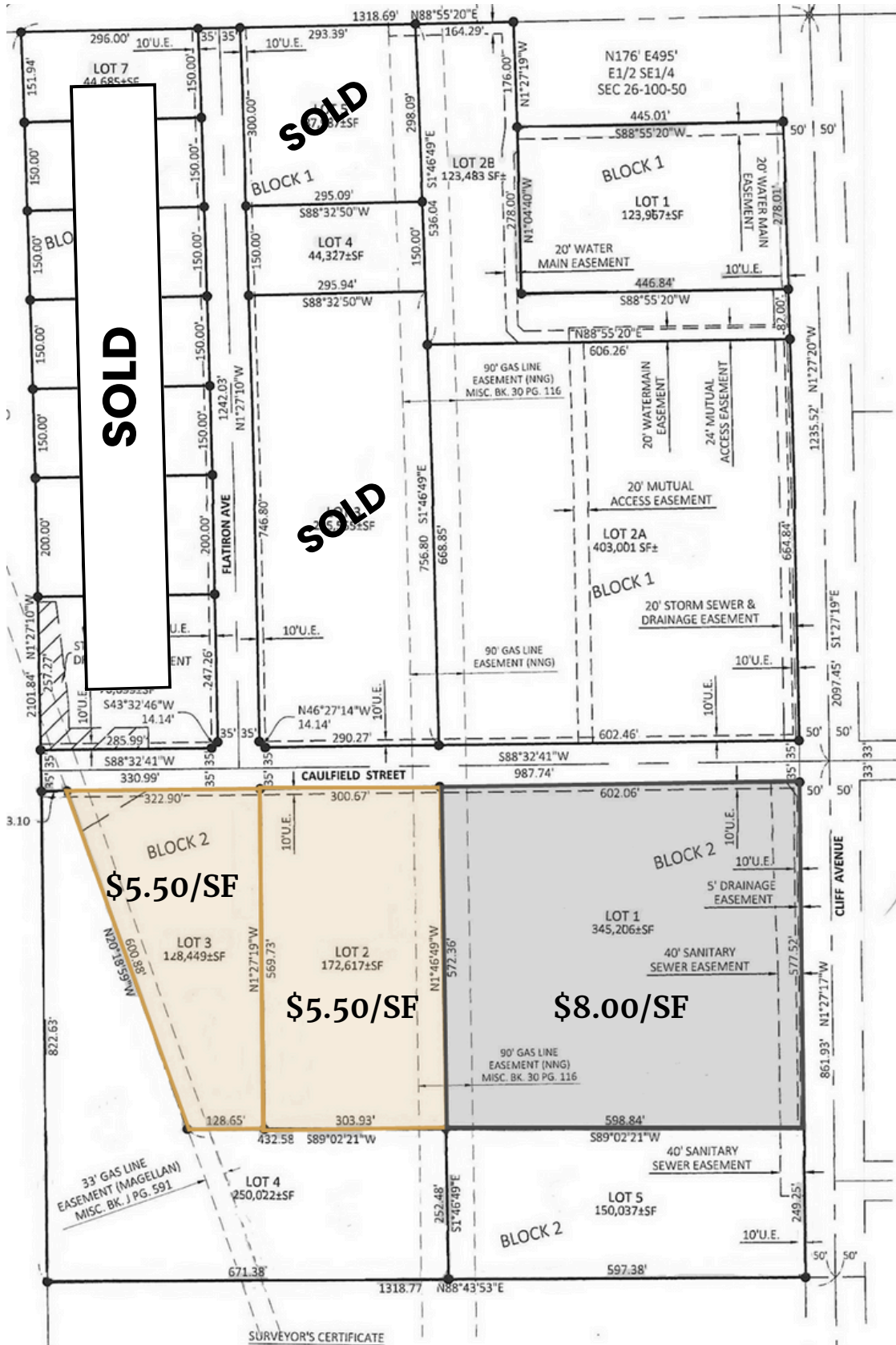
INDUSTRIAL LAND



FLATIRON CROSSING LAND



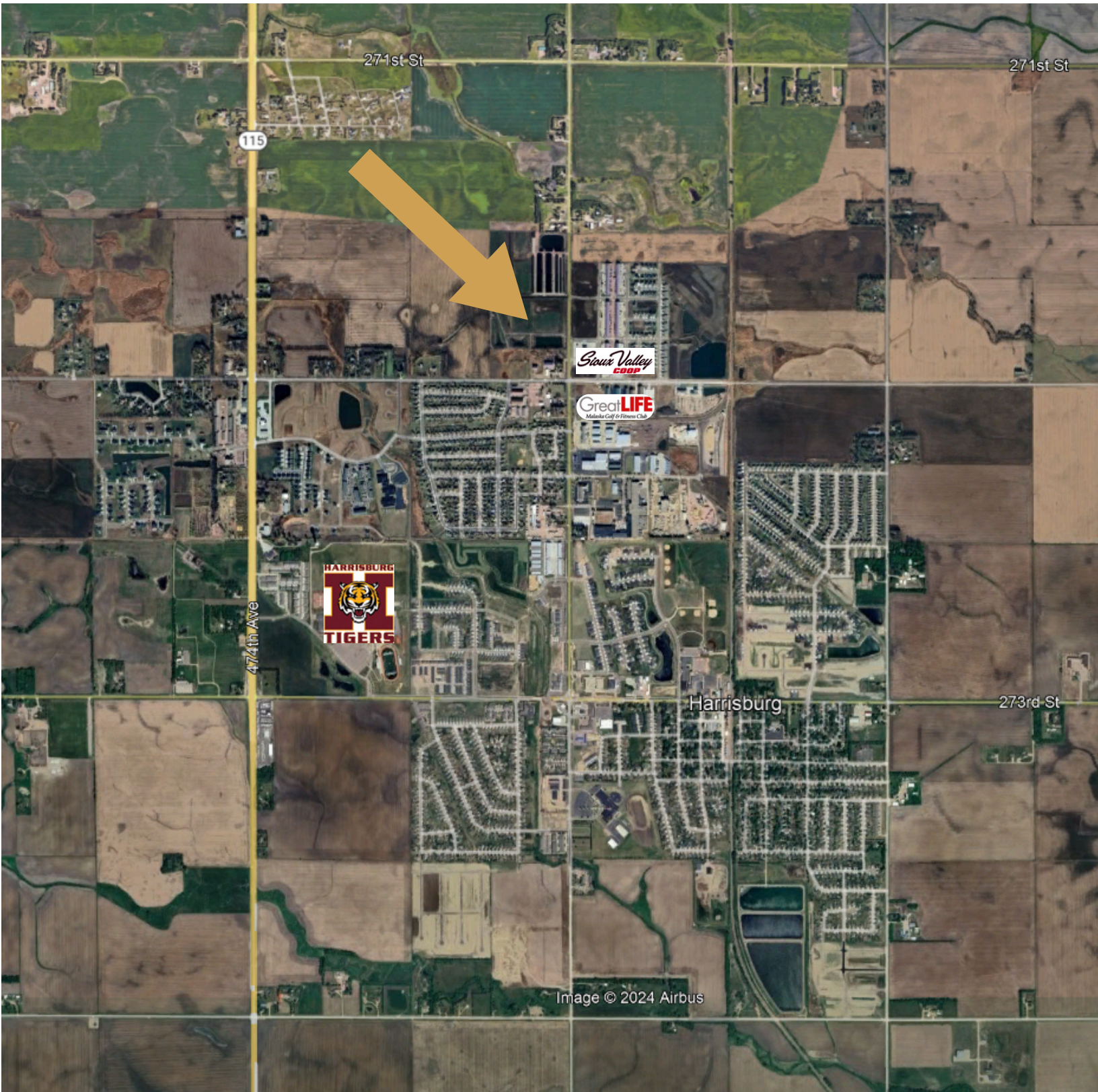
INDUSTRIAL LAND



FLATIRON CROSSING LAND



INDUSTRIAL LAND



FLATIRON CROSSING LAND



INDUSTRIAL LAND

